



CiB with Windows 2012 R2 Best practices Guide

September 2014
Rev V1.02

Supermicro Storage Group

White Paper

Windows Server 2012 R2 on Supermicro Cluster-in-a-Box performance and availability considerations.

Executive Summary

This document introduces Supermicro's SuperStorage bridge bay Cluster-in-a-box (CiB) products and presents a number of considerations/best practices for the System Administrator when deploying the product within a Microsoft Windows 2012 R2 ® High Availability environment.

A set of guidelines are presented which shows how best to deploy the solution in order to maximize performance and availability in a number of generic usage scenarios. The intent is to show characteristics of the system and any performance figures are not intended to be taken as benchmark metrics but rather to illustrate general behavior under a range of conditions. The true test of performance is dependent on a wide variety of vectors such as infrastructure, I/O load, number of clients and the user's application.

The first section of this guide introduces the CiB and explains how it naturally complements the High Availability features of Windows Server 2012 R2 to bring affordable highly reliable solutions to the SMB market. Particular attention is given to Windows 2012 features such as tiering and write back caching along with the use of network optimization. The CiB has been designed as a complete plug and play solution and the default shipping configuration has been carefully chosen to complement these business critical features. The emphasis in this document is to provide a set of guidelines within a *generic* environment.

The final section presents a number of well documented examples covering configuration examples to show how to configure high availability shares, iSCSI targets and tiered drives.

It is planned at a later date to provide application specific white papers within particular environments such as Microsoft Exchange and MSSQL.



Best practices and tips are highlighted in bold text with a “note icon” throughout the document!



Disclaimer

The intent of this document is to provide a set of general guidelines for the user deploying the Supermicro CiB product. These guidelines are derived from our internal testing and customer feedback and may not be always be appropriate for individual deployments. The appropriate software vendor should be consulted as the definitive resource. Information contained herein is provided with the best intent, however Supermicro cannot be held responsible for errors or omissions contained in this document.

Feedback is greatly encouraged.

All Trademarks respected and acknowledged.

Contents

Executive Summary.....	i
Disclaimer.....	ii
1. System Considerations and Introduction.....	1-1
Hardware Reliability.....	1-1
Achieving RAS.....	1-1
2. Introduction to Cluster-in-a-Box.....	2-1
Hardware Layout.....	2-2
Performance Considerations	2-7
Network Considerations	2-7
Enabling Jumbo Packets.....	2-7
Creating a Teamed Network	2-8
3. Configuration Walkthroughs.....	3-1
Example 1 - Creating a Storage Pool.....	3-1
Example 2 - Creating a Virtual Disk.....	3-4
Example 3 - Creating a Volume.....	3-7
Example 4 – Creating a File Share Role.....	3-10
Accessing the share.....	3-17
Example 5 – Creating an iSCSI Target Role	3-17
Example 6 – Creating a Storage Tier	3-22
Example 7 – Moving Ownership	3-26
Quorum and Ownership	3-29
Further Resources.....	3-29
4. References and Glossary.....	4-1
Glossary of terms	4-1
References/Useful Links.....	4-2

Figure 2-1 SSG-6037B-CIB032	2-1
Figure 2-2 SSG-2027B-CIB020H.....	2-1
Figure 2-3 937R-E2JB JBOD expansion Chassis	2-1
Figure 2-4 Rear View of CiB Models.....	2-2
Figure 2-5 Rear View of Nodes Showing Ethernet Port Assignment	2-3
Figure 2-6 Default Storage Pool Configuration	2-3
Figure 2-7 (SATADOM) SATA Disk on Module Device.....	2-4
Figure 2-8 CiB Expansion Capabilities	2-4
Figure 2-9 Top View Showing COA Labels.....	2-5
Figure 2-10 Tiering within a Virtual Drive	2-6
Figure 2-11 Enabling Jumbo Frames on an Ethernet X540-AT2 NIC.....	2-8
Figure 2-12 Configuring a New Teamed NIC.....	2-8
Figure 2-13 Add the New Team	2-9
Figure 2-14 Naming and Selecting the NICs for Teaming	2-9
Figure 2-15 Viewing the New Teamed Network Connection	2-9
Figure 3-1 Starting the Storage Pool Wizard.....	3-1
Figure 3-2 Selecting and Naming the New Pool.....	3-2
Figure 3-3 Selecting the Physical Disk to be Added to the New Pool	3-2
Figure 3-4 Pool Creation Confirmation Screen	3-3
Figure 3-5 Newly Created Storage Pool	3-4
Figure 3-6 Starting the Virtual Disk Wizard.....	3-5
Figure 3-7 Selecting the Virtual Disk Layout	3-6
Figure 3-8 Selecting the Virtual Drive's Capacity	3-7
Figure 3-9 Confirming the Virtual Disk Configuration.....	3-7
Figure 3-10 Selecting the Server and Disk for the New Virtual Volume	3-8
Figure 3-11 Selecting the Volume's Capacity.....	3-8
Figure 3-12 Assigning a Volume's Drive Letter	3-9
Figure 3-13 Confirmation of Volume Creation	3-9
Figure 3-14 Configuring a High Availability Role.....	3-11
Figure 3-15 Selecting the High Availability Role	3-11
Figure 3-16 Selecting the File Server Type.....	3-12
Figure 3-17 Naming the Role for Clients.....	3-12
Figure 3-18 Selecting Storage for the Share	3-13
Figure 3-19 Confirming the Clustered Role Selection.....	3-13
Figure 3-20 File Server Summary Screen	3-14
Figure 3-21 Showing the Newly Added File Server Role.....	3-14
Figure 3-22 Selecting the File Share Location	3-15
Figure 3-23 Selecting the Share Setting	3-16
Figure 3-24 Confirming the SMB Share Creation.....	3-16
Figure 3-25 Entering the File Share IP Address.....	3-17
Figure 3-26 Viewing the Newly Created Share	3-17
Figure 3-27 Bringing up the Failover Cluster Manager	3-18



Figure 3-28 Selecting a High Availability Role	3-18
Figure 3-29 Selecting a Highly Available iSCSI Target Server Role	3-19
Figure 3-30 Naming the iSCSI Target Server Role	3-19
Figure 3-31 Selecting the Virtual Disk for the iSCSI Role	3-20
Figure 3-32 Confirming the iSCSI Target Server Selection	3-20
Figure 3-33 Summary Screen of the iSCSI Server Role Creation	3-21
Figure 3-34 Showing the iSCSI Target Role	3-21
Figure 3-35 Creating a Tiered Virtual Disk	3-22
Figure 3-36 Selecting the Storage Layout	3-23
Figure 3-37 Selecting the Resiliency Type	3-24
Figure 3-38 Selecting the Capacity and SSD to HDD Ratio for the VD	3-25
Figure 3-39 Virtual Disk Creation Confirmation	3-25
Figure 3-40 Changing Node Ownership - Screen 1	3-26
Figure 3-41 Changing Node Ownership - Screen 2	3-26
Figure 3-42 Changing Node Ownership - Screen 3	3-27
Figure 3-43 Changing Node Ownership - Screen 4	3-27
Figure 3-44 Changing Node Ownership - Screen 5	3-28
Figure 3-45 Selecting a Role's Preferred Owner	3-28

Tables

Table 1 Add-on Board Options	2-1
Table 2 CiB Specifications at a Glance	2-2





1. System Considerations and Introduction

When implementing a high availability solution it is important to understand the system as a whole from a hardware, software, application and environment perspective. All aspects need to be considered carefully in order to derive an optimum tradeoff between cost, performance and reliability. Hardware must be reliable, cost effective and able to deliver data in a timely fashion. This has been the design objectives for Supermicro's Cluster-in-a-Box product

Hardware Reliability

Obviously all physical components are subject to failure, but the key issue for the implementer with a High Availability design is to ensure that the system delivers data in a continuous fashion (although it may be at reduced delivery rates) with no impact on data availability to the clients. Ideally the frequency of component failure should be a rare event and from a hardware perspective this goal is met by implementing a high quality system without any single point of failure. A well designed system such as the Supermicro CiB product features highly reliable, redundant components which will significantly reduce the likelihood of any system downtime occurring. In addition to avoiding this downtime it is also desirable that failed components should be easily serviceable by using replaceable "on the fly" modules thus avoiding having to schedule offline/downtime time. These factors are measured using *Reliability*, *Availability* and *Serviceability* metrics collectively known as *RAS*.

Achieving RAS

Supermicro's CiB product incorporates full system redundancy and tolerates infrastructure failures within Microsoft's 2012 cluster environment since the cluster will automatically reroute clients should a host fail.

- *Reliability* is accomplished by the use of Supermicro's redundant component design.
- *Availability* is achieved through the synergy of Microsoft Windows and Supermicro's CiB design.
- *Serviceability* is met by the use of the innovative Super SBB modules.

The next section of this paper introduces the hardware components of the CiB and shows how it has been designed to meet these challenges.

2. Introduction to Cluster-in-a-Box

Supernova currently offers two major CiB products. The first, SSG-6037B-CIB032, is a 16 bay 3U product supporting 3.5" hot-swap SAS drives. JBOD expansion ports are included to support an additional 64 drives in 4 expansion enclosures.



Figure 2-1 SSG-6037B-CIB032

The second model is the SSG-2027B-CIB020H, which is a 24 bay 2U product supporting 2.5" hot-swap SAS drives. This system can also support 4 expansion enclosures.



Figure 2-2 SSG-2027B-CIB020H

The JBOD expansion enclosure is shown in Figure 2-3.





Figure 2-3 937R-E2JB JBOD expansion Chassis

There are a number of add-on modules offered for Ethernet connectivity as shown in the table below.

Table 1 Add-on Board Options

Description	Part Number
Quad-port 1G	AOC-SG-i4
Dual-port 10G Base-T	AOC-STG-i2T
Dual-port 10G SFP+	AOC-STGN-i2S

Table 2 CiB Specifications at a Glance

		
Part Number / Datasheet	SSG-6037B-CiB032	SSG-2027B-CiB020H
Form Factor	3U / 16x 3.5" Hot-swap Bays	2U / 24x 2.5" Hot-swap Bays
Server Node	2	2
Processors per Node	Dual Intel Xeon E5-2403 v2	Dual Intel Xeon E5-2403 v2
Memory per Node	32GB	64GB
Hard Drives	8x 4TB Nearline SAS Drives	20x 1TB Nearline SAS Drives
SSD	-	4x 200GB SSD
JBOD Expansion Ports/per Node	Dual SAS2 ports	Single SAS2 port

The Super SBB design provides hot-swappable canisters for active components.

Hardware Layout

Figure 2-4 shows a rear view of both models. Node locations in this document are left-to-right when the system is viewed from the front. Each system features a number of vacant PCI-e slots for additional functionality.

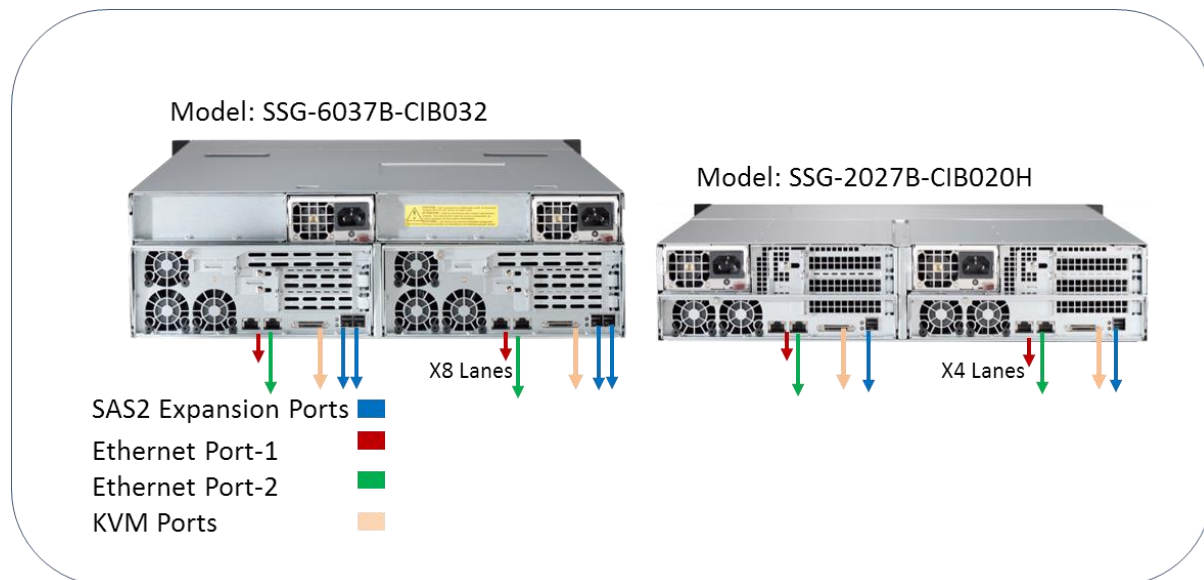


Figure 2-4 Rear View of CiB Models



Note node names may be swapped if server modules are relocated in another slot. Cluster-N1 and Cluster-N2 names are not bound to left or right server locations.

Ethernet port 1 on the nodes is set for DHCP by default and should be connected to the public network and port 2 is set for heartbeat communications, as shown in Figure 2-5. In addition, there is an option to add 10 Gigabit Ethernet cards, as listed in Table 1 earlier.

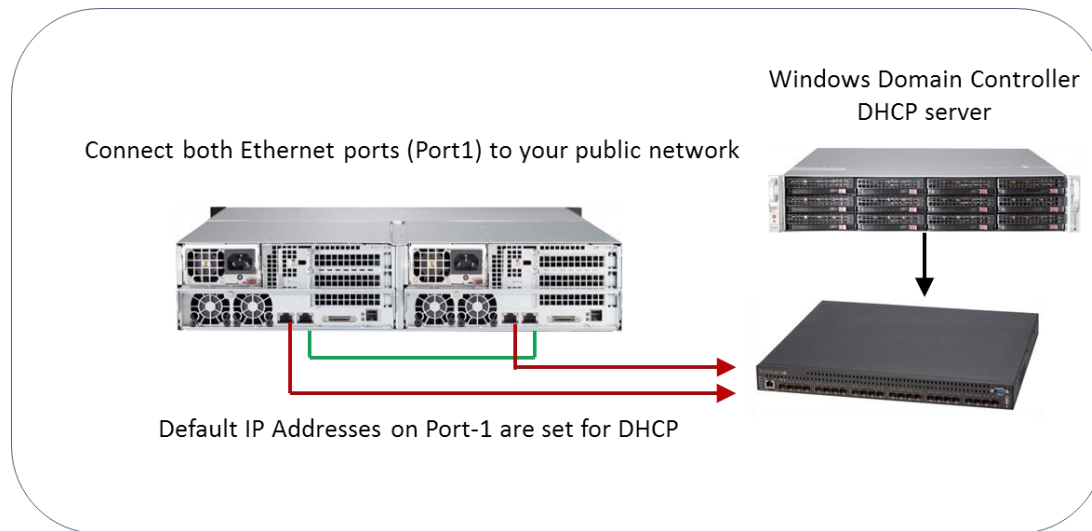


Figure 2-5 Rear View of Nodes Showing Ethernet Port Assignment

The CiB ships with a pre-configured storage pool and pre-provisioned quorum disk to simplify installation.



Refer to page 3-29 for a further discussion on the role of the quorum disk within a Windows 2012 cluster.



New Storage VDs should be provisioned after the cluster is configured and verified using the Validation Cluster tool

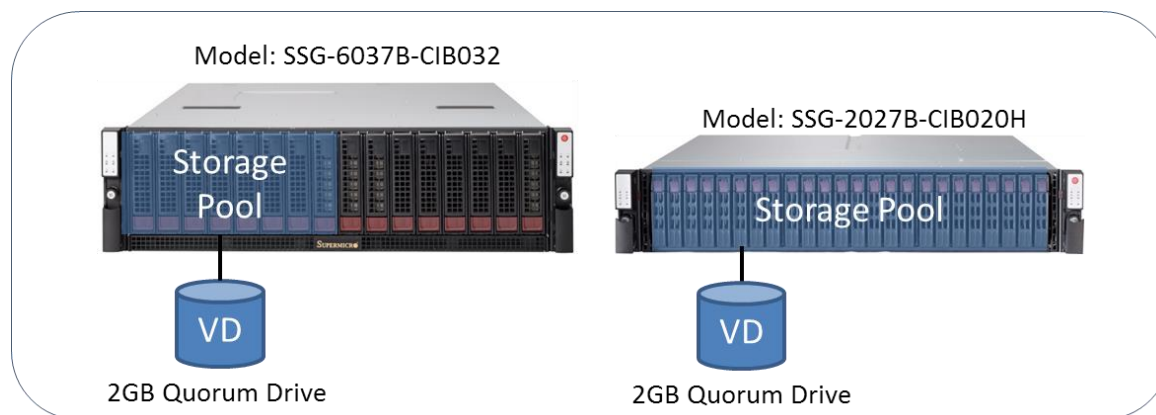


Figure 2-6 Default Storage Pool Configuration

The 3U model ships with 8 x HDDs and the 2U model ships with 4 x SSDs and 20 X HDDs. All disks are configured as a single pool by default along with a small capacity quorum disk.

Each node within the CiB has its own boot disk which is private and not sharable. This boot disk is not part of the removable front bay disks and is a SATADOM (SATA Disk on Module) device as shown below.

The DOM is located internally on the mother board and is preinstalled for ease of deployment. The SATADOM provides better performance and lower power consumption than an HDD device.



Figure 2-7 (SATADOM) SATA Disk on Module Device

Figure 2-8 shows that either of the systems can be expanded through the mini SAS HD connector to 4 x 16 bay expansion enclosures, giving a total of 384 TB of additional storage.

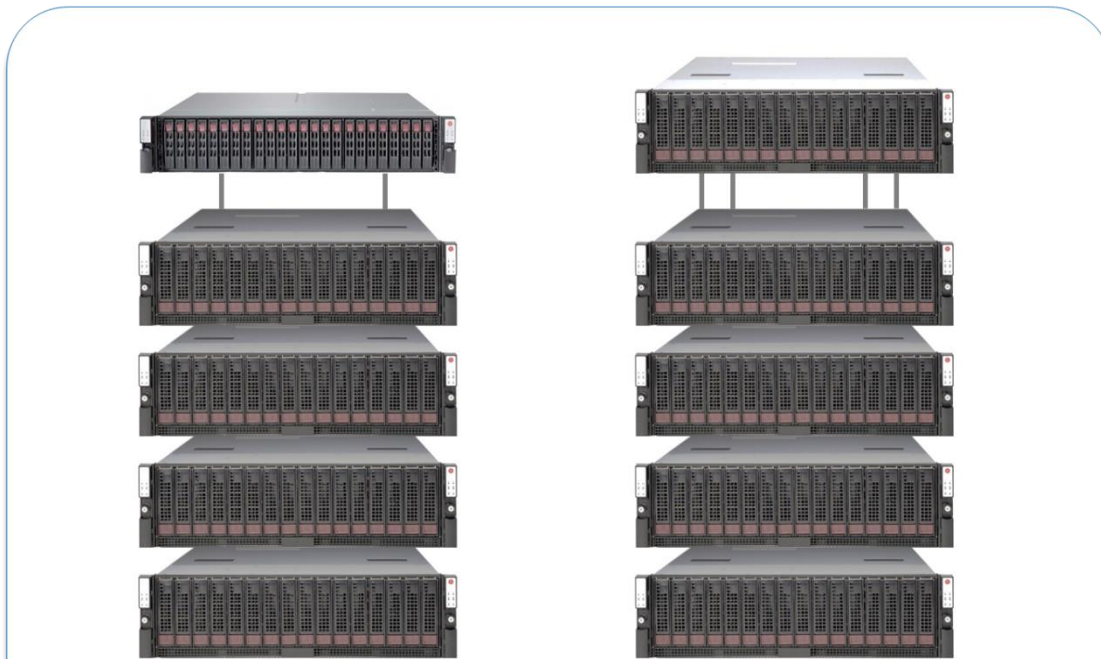


Figure 2-8 CiB Expansion Capabilities

Figure 2-9 shows where the Certificate of Authenticity labels are placed. Note this in case the Operating System has to be re-installed.

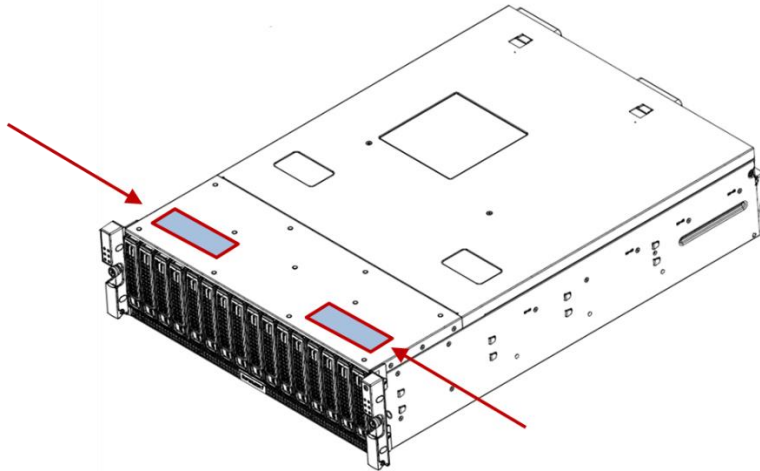


Figure 2-9 Top View Showing COA Labels

For further information refer to the references listed in this document.

Storage Spaces

Storage Spaces from Microsoft virtualizes physical disks into pools which in turn can be divided into virtual disks. These virtual disks feature improved resilience, performance and ease of management compared to their physical counterparts and are an aggregation of the physical disks.

Layout and Resiliency Options

Storage Spaces provides a number of layout options –

- Simple requires at least one disk and is optimized for performance and capacity, however it provides no additional protection in that there is only one copy of the data.
- Mirrored requires a minimum of two disks and will duplicate the data. In this case a catastrophic disk failure will still be able to deliver the data to the clients since the remaining disk has a full copy. In this instance only half of the physical drive capacity is available due to the mirroring function.
- Parity stripes data and redundancy information across several disks. This improves capacity utilization when compared to the mirrored configuration described above. Single disk failure protection can be achieved with three disks and dual disk failure protection can be achieved with seven disks.
- Storage Spaces can automatically rebuild mirror and parity spaces in which a disk fails by using dedicated disks that are reserved for replacing failed disks (hot spares), or more rapidly by using spare capacity on other drives in the pool. Storage Spaces also includes background scrubbing and intelligent error correction to provide continuous service availability despite storage component failures. In the event of a power failure or cluster failover, data integrity is preserved so that recovery happens quickly and does not result in data loss. (Microsoft, 2014).

Performance Enhancements

Tiering

In addition to data protection, Storage Spaces also provides enhanced performance by the use of tiered storage. When a combination of Hard Disk Drives (HDDs) and Solid State Drives (SSDs) are used together, the system will automatically move “hot” data onto the SSDs. The improved access times of the SSDs ensure that frequently accessed data is delivered more efficiently to the clients. This is done transparently by the system. Tiering can be selected at virtual disk creation time and the ratio of SSD to HDD storage space can be selected as shown in Figure 2-10. In this example the ratio is 1:10.

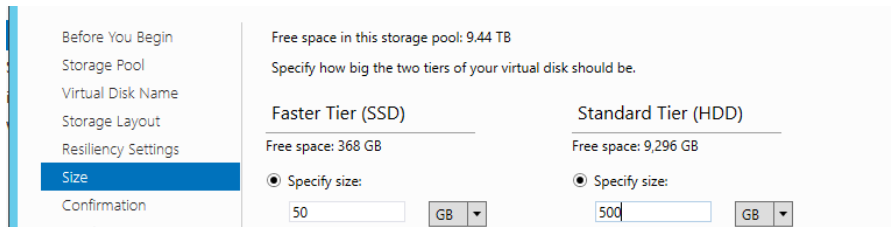


Figure 2-10 Tiering within a Virtual Drive

Data is dynamically moved at a sub-file level between both tiers.

Although the benefits of tiering are highly dependent on the application, in general it is well suited for *transient* hot data. Hot data is also termed the *working set*.



The goal of tiering is that frequently accessed files are located on the SSD with less frequently accessed files being located on the HDDs. This way the performance benefits of SSD can be realized without suffering the cost disadvantages.



The default shipping configuration of the Supermicro SSG-2027B-CIB020H (described on page 2-1) uses 4 x SSDs and 20 x HDDs in a single pool and with the ratio of SSD to HDD designed to ensure good use of the tiering feature. In addition, a quorum disk is used within this shared storage pool.

Write-back Cache.

Storage Spaces can use a write-back cache on SSDs in pool-to-buffer write operations. Once the data has been written to the SSD, an acknowledgement is sent back to the issuer of the I/O. The data is then subsequently written to the HDD. In general this works well for small size block write operations which are common in many applications such as transaction processing. It will also help “smooth out” short bursts of activity.

Provisioning

Volumes may be fixed or thin provisioned. The advantage of thin provisioning is that the capacity presented can be larger than the actual physical capacity. Storage can be added as required at a later stage when needed rather than having to purchase it at deployment time. Thin provisioning exhibits *allocation on demand* behavior.



For cluster shared volumes, use fixed provisioned disks. The test configurations used in this document all used fixed provisioning.

Performance Considerations

The CiB system is usually deployed as a High Availability Storage Server in that it will be accessed by a number of clients via a network interface. Clients may access the storage using block or file based protocols. Block protocols are normally implemented with iSCSI and SMB can be used as the file protocol. The system may also provide a location for number of Hyper-V Virtualized Machines. Drives will be configured using Windows Storage Spaces, which provides ease of storage management along with data protection features.



Simple spaces are suitable for high performance where data resiliency is less important. Examples include high speed static lookups, video rendering or temporary data storage where the job can be rerun. Mirrored spaces provide good performance with general purpose file shares.

Mirrored spaces are used for general purpose file shares.

Parity based drives can be used for archival or data streaming services. With the initial release of Windows 2012, parity spaces were not supported in clustered pools. This is no longer the case with Windows 2012 R2.



Thin provisioning can impact performance as it may have to allocate storage and integrate it within the device in real time. This is not normally a consideration with traditional business oriented applications but may cause an interruption to critical real-time transfers. In addition since the Operating System is presented with virtual capacity rather than physical capacity, the onus is on the administrator to ensure that storage is added to the thinly provisioned volume in time. The system will, however, flag events ahead of time when there is not enough capacity to perform a write. In addition the storage space will be taken offline if it runs out of capacity to mitigate any chance of data loss.

Network Considerations

The standard configuration uses Gigabit Ethernet, which is suitable and commonplace on the client side. If a large number of clients are serviced or if higher throughput is required then it is recommended to use 10GigE for the CiB server connections.



Network interfaces should also be *teamed* for to address performance and resiliency issues. In addition, *Jumbo frames* can be configured for performance reasons.

Enabling Jumbo Packets

Jumbo frames can be enabled by selecting the network interface card and then using the <Advanced> tab to change the value as shown in Figure 2-11.

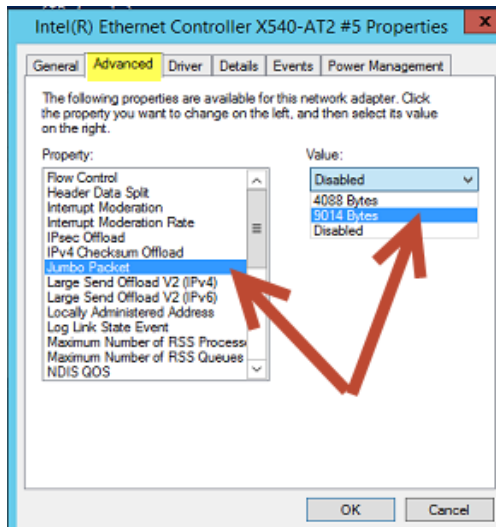


Figure 2-11 Enabling Jumbo Frames on an Ethernet X540-AT2 NIC

Creating a Teamed Network

To create a teamed network, select a server from the server manager screen and then right click to select <Configure NIC teaming> to form a combined network team.

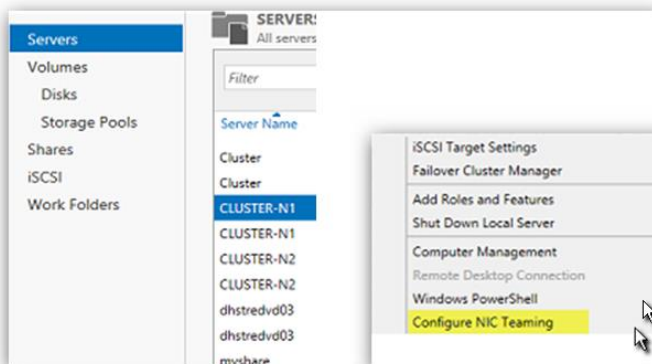


Figure 2-12 Configuring a New Teamed NIC

At the next screen select <Add to New Team>.

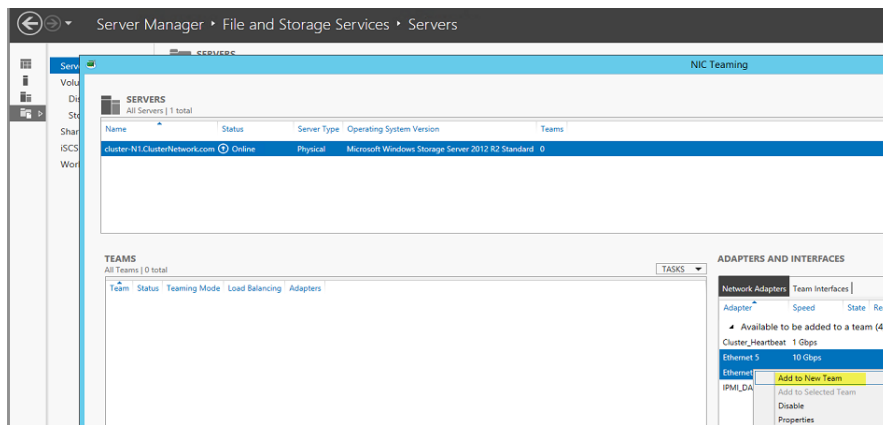


Figure 2-13 Add the New Team

Name the team as shown below.

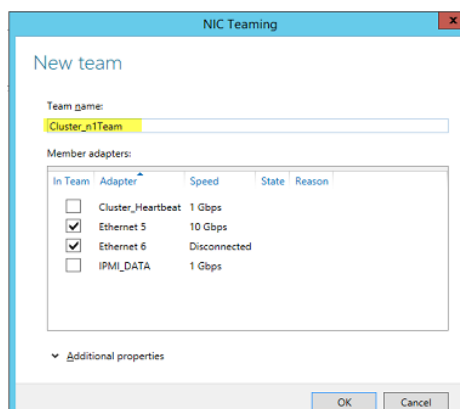


Figure 2-14 Naming and Selecting the NICs for Teaming

The teamed NIC will now show up as a new Network Connection.

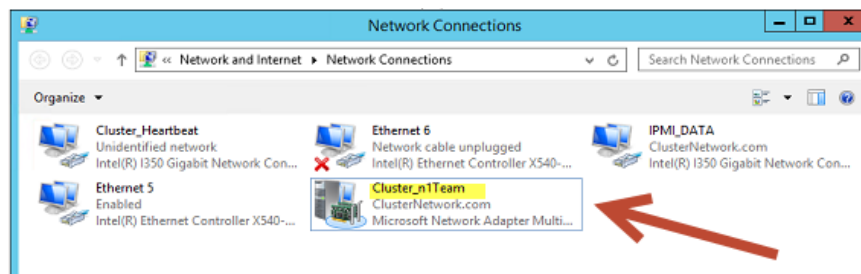


Figure 2-15 Viewing the New Teamed Network Connection

3. Configuration Walkthroughs

Example 1 - Creating a Storage Pool

From the Server Manager screen – select <Tools> - <Failover Cluster Manager>. Expand the Storage branch on the left and select <New Storage Pool> as shown to bring up the Storage Pool Wizard.

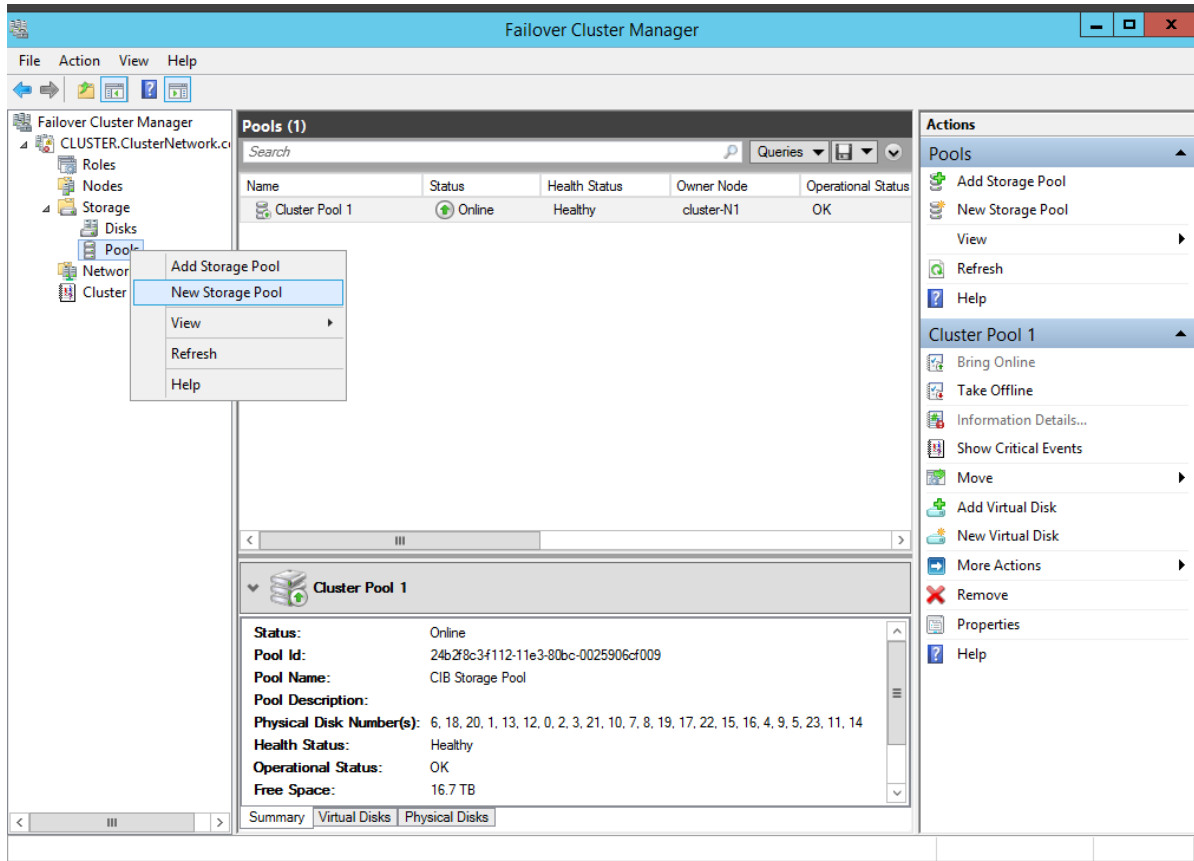


Figure 3-1 Starting the Storage Pool Wizard

In this example, three drives have been added to the optional JBOD enclosure. Microsoft uses the term *primordial* for a set of disks that have not yet been configured as a storage pool. Next the pool needs to be named.

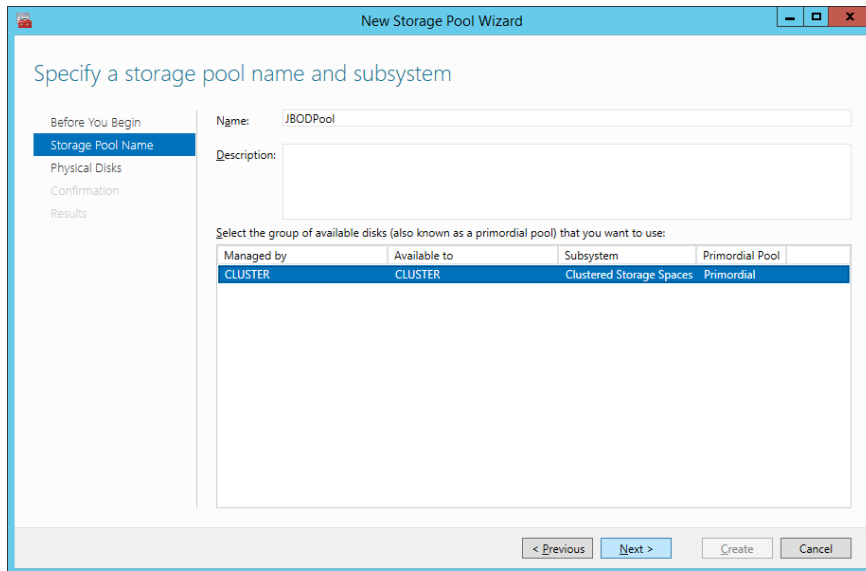


Figure 3-2 Selecting and Naming the New Pool

Select the available disks and then select <Next>.

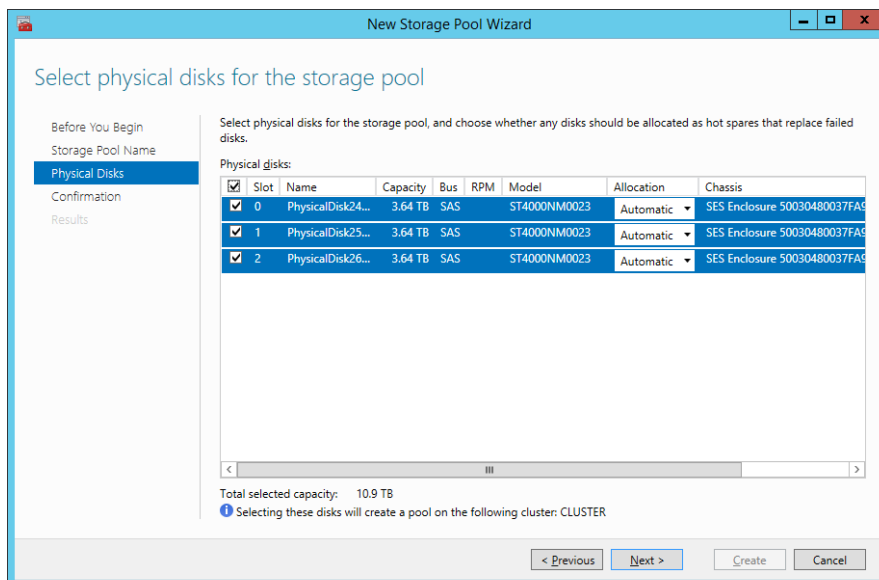


Figure 3-3 Selecting the Physical Disk to be Added to the New Pool

In this case, three physical disks are available. Select them all and then select <Next>. The wizard then shows a confirmation screen.

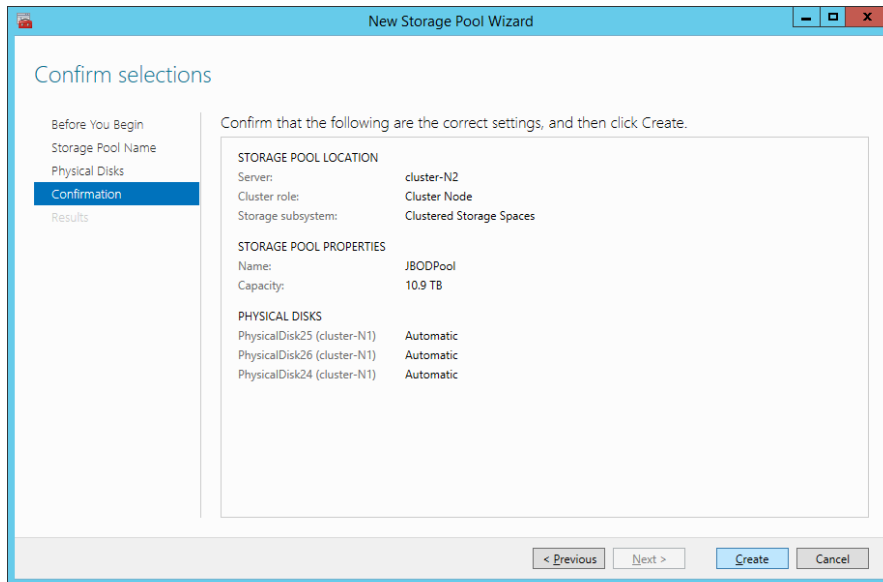


Figure 3-4 Pool Creation Confirmation Screen



It is also possible to designate the disks as *hot spares* where they would automatically be selected as candidates for rebuild operations should a disk fail. In this case though, they are left at the default settings of <Automatic>. In general, as a best practice it is recommended to have a hot spare available within the cluster.



The next screen shows the newly created storage pool, which is Online and Healthy. With the pool selected, the bottom of Figure 3-5 shows the physical disks that make up the pool. It can also be seen that both pools are *owned* by cluster node Cluster-N1. To achieve better utilization, it is recommended to balance the load by changing ownership such that each node owns one of the pools. Note that clustered storage spaces still allow access from each of the nodes. The Move function can be accessed from the right hand side of Figure 3-5. The system allows an automatic choice or it will allow you to select the node to be used.

Ownership is covered in more detail on page 3-26.

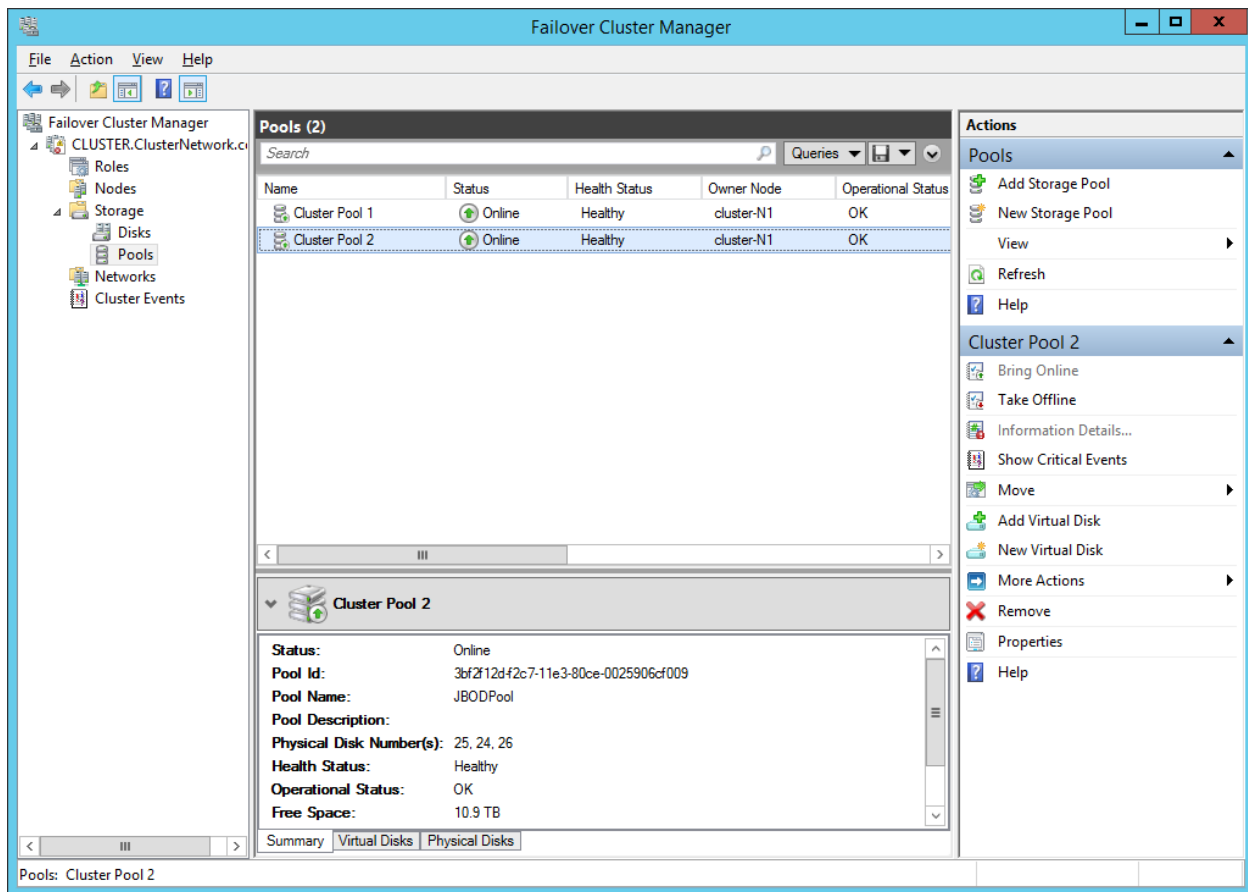


Figure 3-5 Newly Created Storage Pool

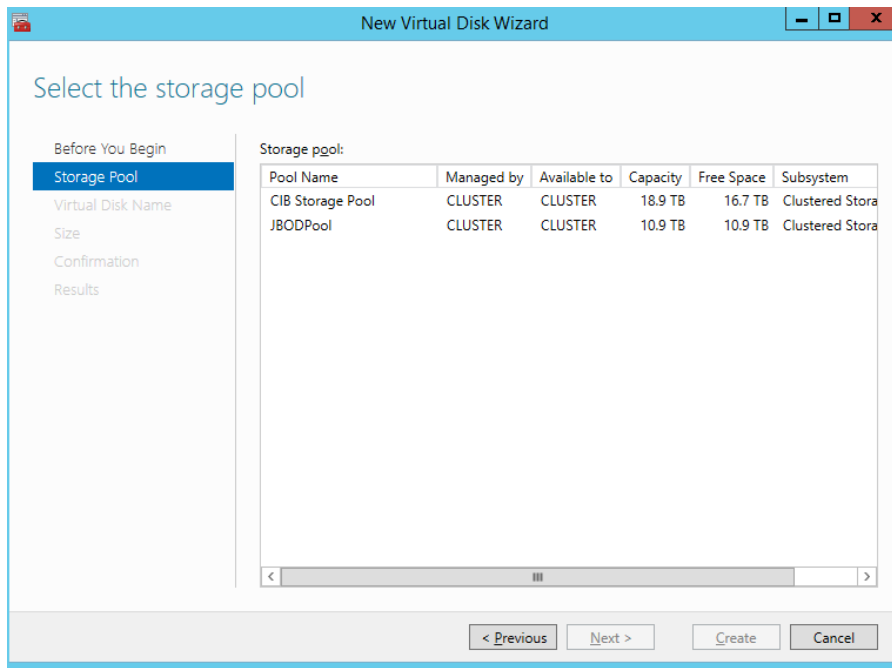
After the pool has been created there is a prompt to configure a new virtual disk.

Example 2 - Creating a Virtual Disk

The CiB as delivered comes with a pre-configured storage pool. The virtual disk will be created from the newly added pool.

Either accept the offer to create the new virtual disk from the storage pool wizard or, from the server manager screen with <Storage Pool> selected, right click to start the New Virtual Disk Wizard.

Select the pool (JBODPool) to start the virtual disk creation.



Name the virtual disk (in this case JBODVD01).

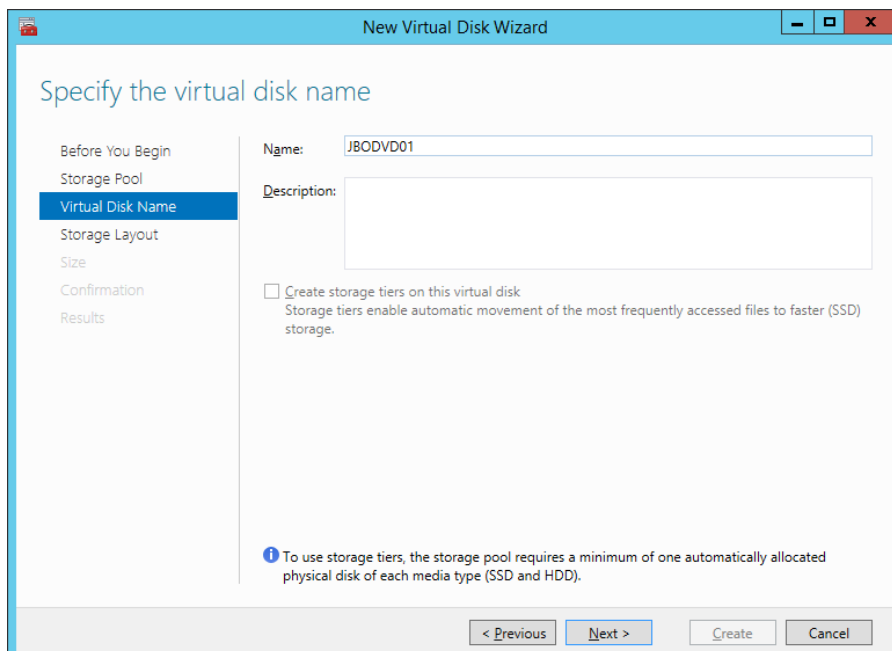


Figure 3-6 Starting the Virtual Disk Wizard



Note that tiering is not an option here and is greyed out with this pool since it contains only HDDs. A tiering example is covered on page 3-24.

The next stage is to select the resiliency option. Refer to page 2-7 to review layout options from a performance perspective.

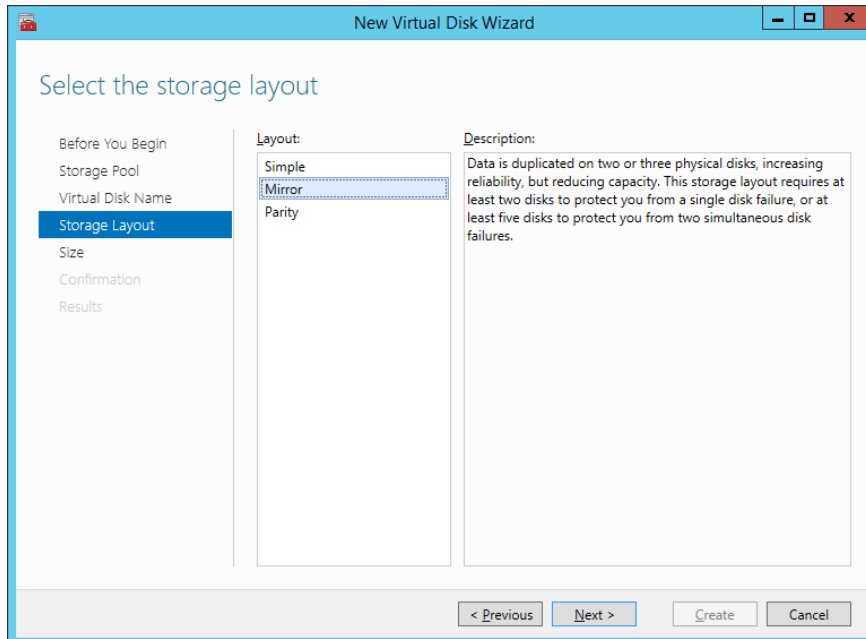


Figure 3-7 Selecting the Virtual Disk Layout

In this example <Mirror> has been selected as the layout.



Note that the three physical disks used here are enough for single parity protection; however seven drives are necessary for dual disk protection. In the interests of performance it is recommended to have a minimum of five drives for single parity based layout schemes.

After the layout has been selected, the next choice is to decide what capacity of the pool should be configured for the virtual drive.

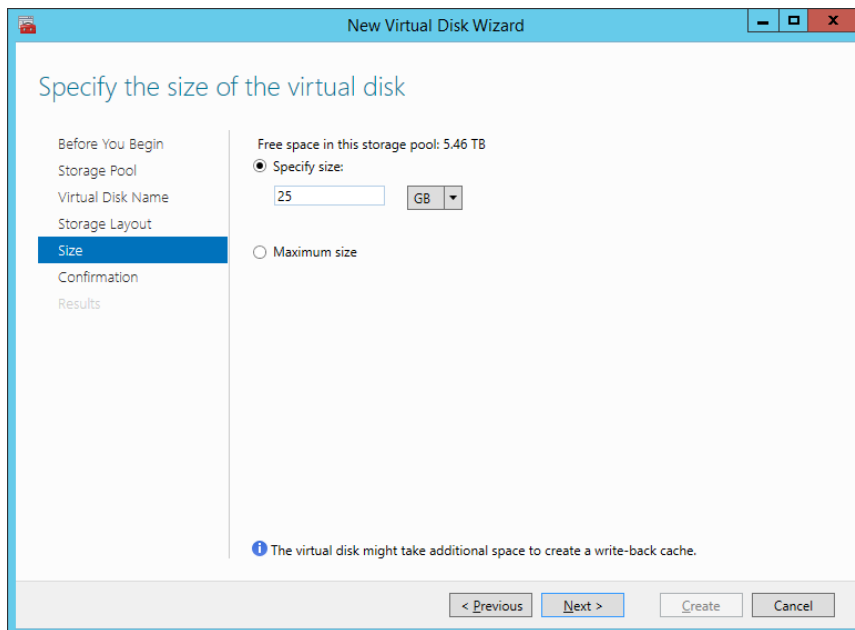


Figure 3-8 Selecting the Virtual Drive's Capacity

Finally, accept the confirmation screen.

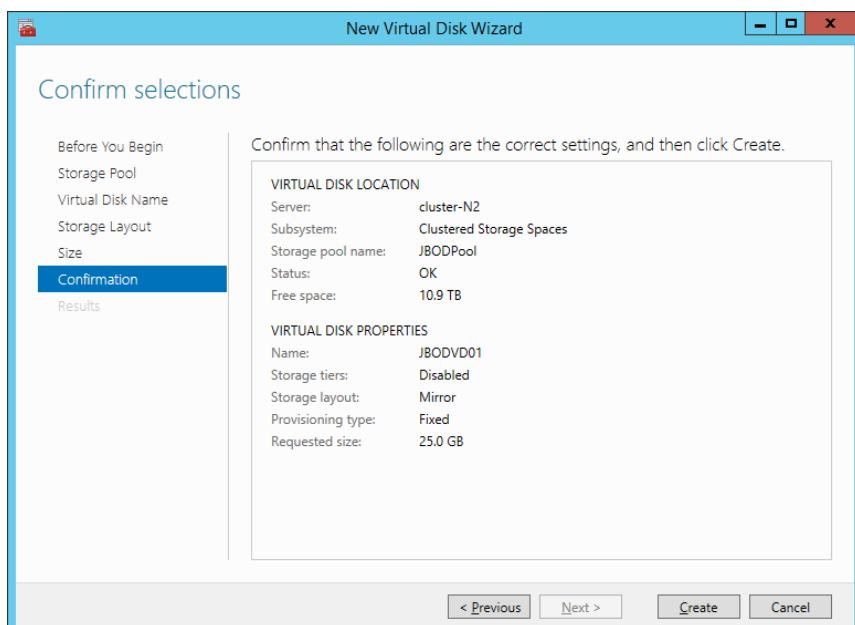


Figure 3-9 Confirming the Virtual Disk Configuration

Example 3 - Creating a Volume

Users will interact at the volume level. The volume is the entity that can be formatted and assigned a drive letter when required. A volume can be created from a physical disk or a virtual disk and is seen as a Logical Unit (LUN).



By default, the only physical device used as a volume in the CiB is the boot volume.

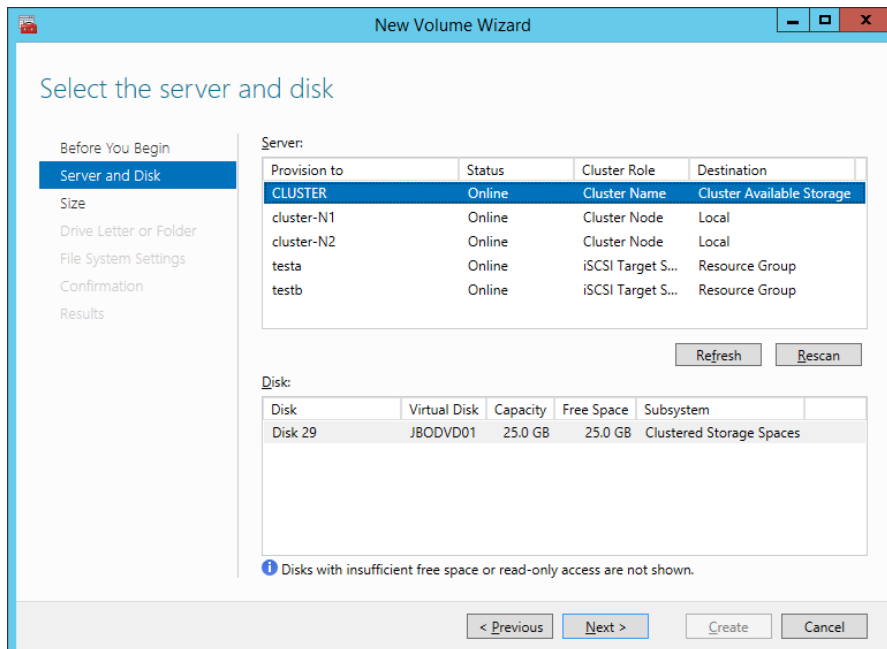


Figure 3-10 Selecting the Server and Disk for the New Virtual Volume

The first screen presents two choices – Server and Disk. The new volume is to be provisioned to the “Cluster” server as shown in the top of Figure 3-10. The new virtual disk to be used is shown as available with the 25GB of capacity that was created earlier shown in Figure 3-8.

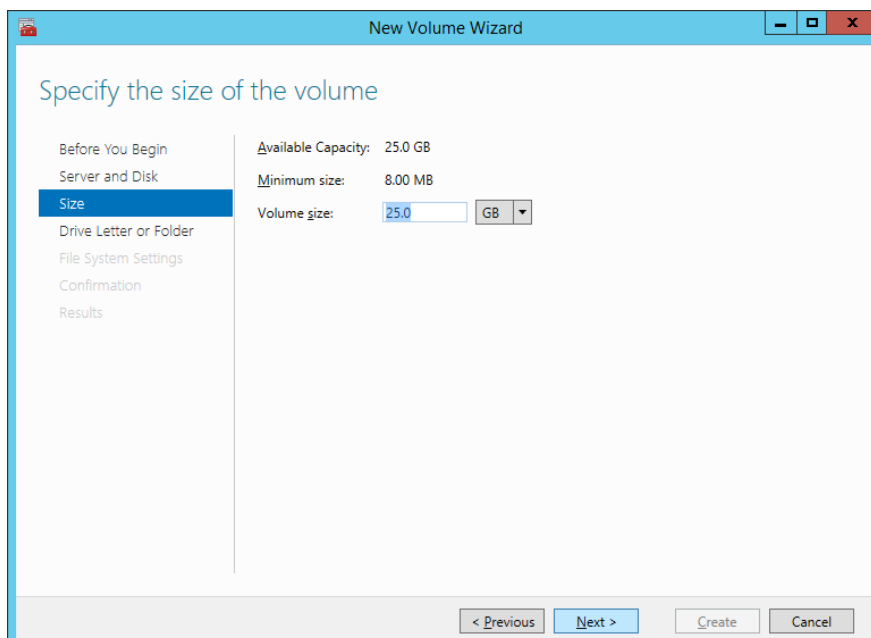


Figure 3-11 Selecting the Volume's Capacity

Use all or a portion of the available virtual disk capacity and assign a drive letter.

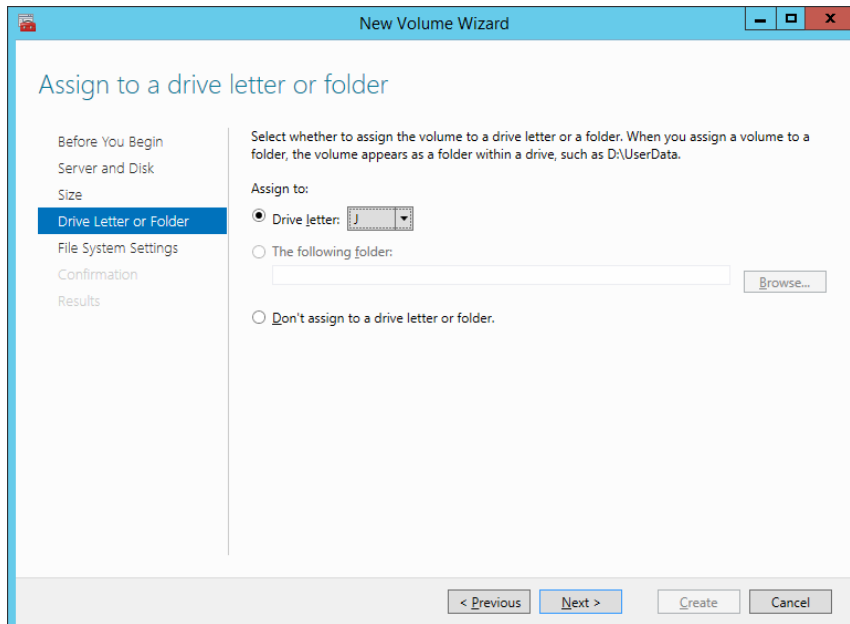


Figure 3-12 Assigning a Volume's Drive Letter

The next stage is to decide on the file system type.



Note: NTFS is shown here as the default file system; however Microsoft has recently introduced the ReFS (Resilient File System), which uses a checksum to provide enhanced data integrity. In addition, it will not overwrite a previous edition of a file until the new version has been safely written to disk.

Finally, confirm the choices.

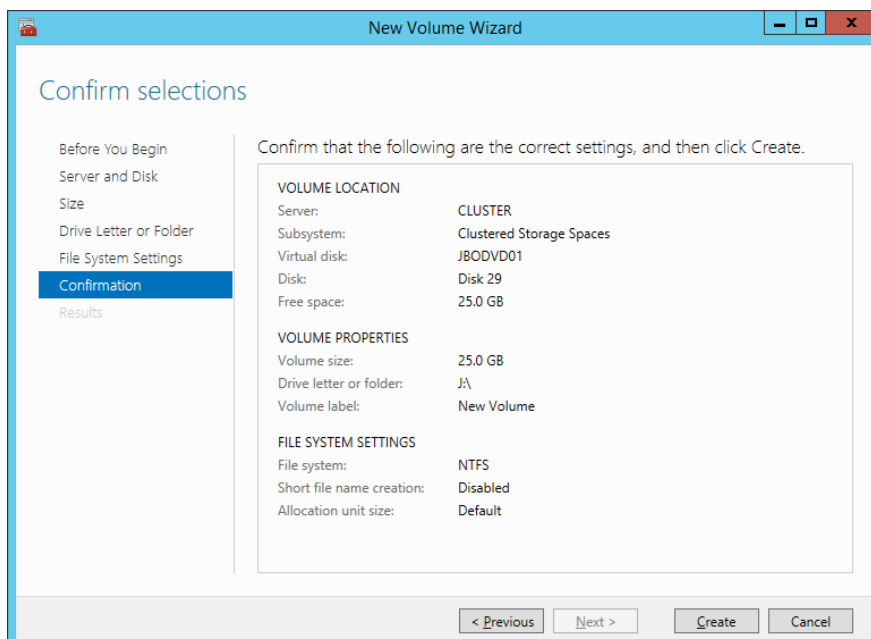
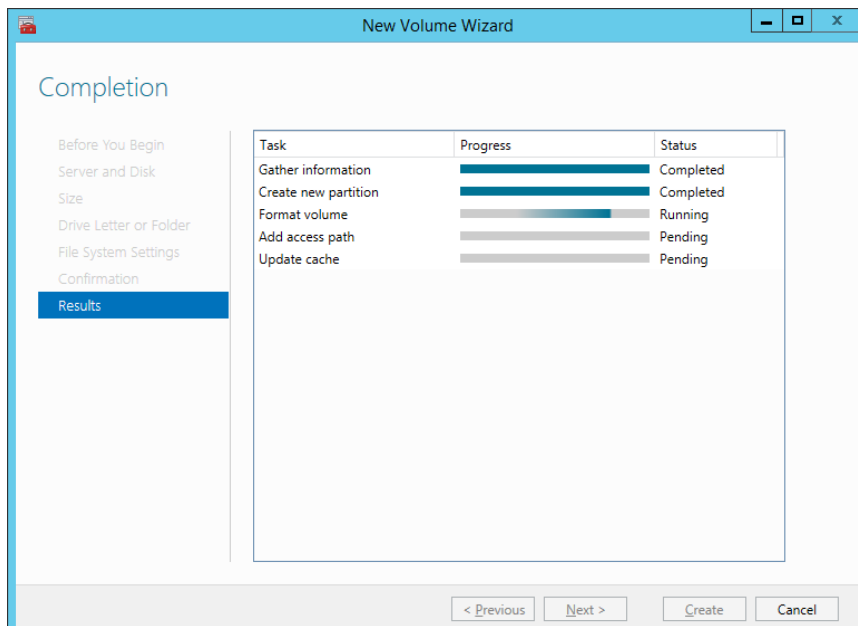


Figure 3-13 Confirmation of Volume Creation



Example 4 – Creating a File Share Role

The next example will show how to create an SMB file share. The first stage is to add a new role. There are two existing iSCSI target roles and a third role will be added.



Note: A number of high availability roles can be configured using Microsoft's failover cluster such as DHCP. The use of these high availability roles is in general much easier to configure in a clustered environment.

From the Failover Cluster Manager screen select <Roles> and <Configure Role>.

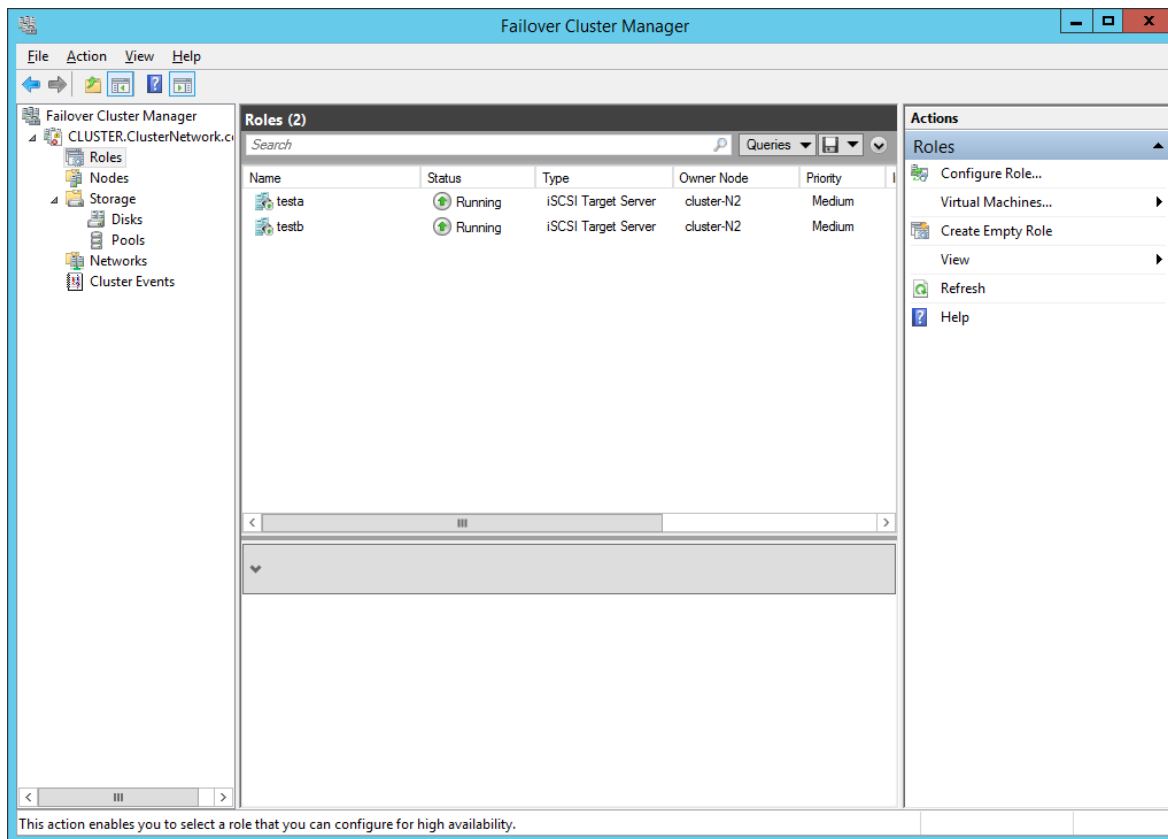


Figure 3-14 Configuring a High Availability Role

Select the desired role (in this case File Server) from the drop down choices.

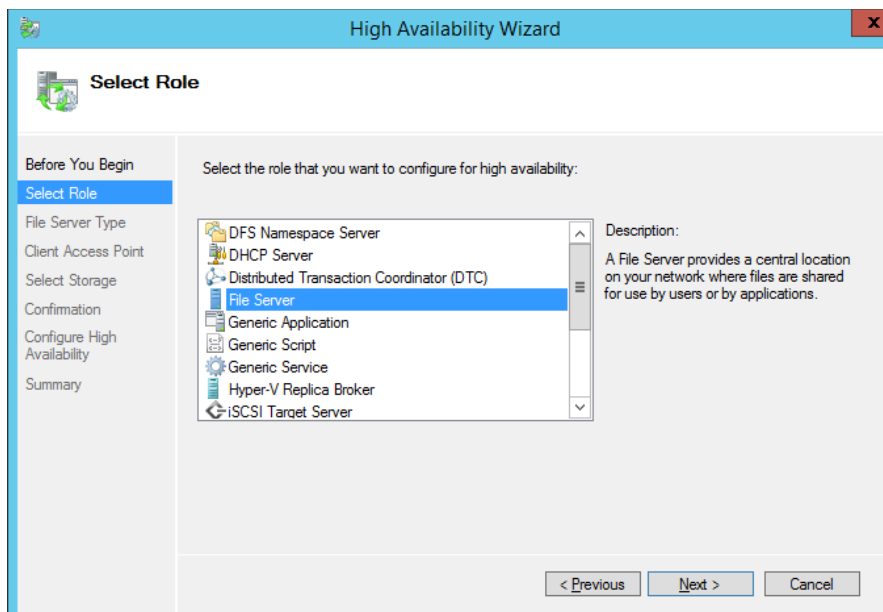


Figure 3-15 Selecting the High Availability Role

Choose the <File Server for general use> option.



Note that the scale out file server is used for distributed applications where clients can access files across multiple nodes. This is only appropriate for the SMB protocol.

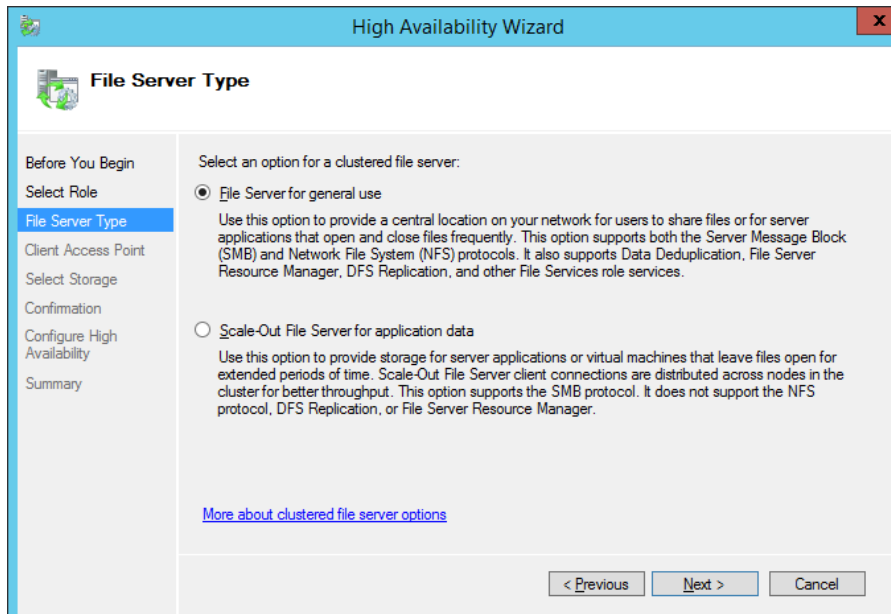


Figure 3-16 Selecting the File Server Type

Name the role that will be accessed by the clients. NETBIOS names will be truncated and an IP address will be created for client access.

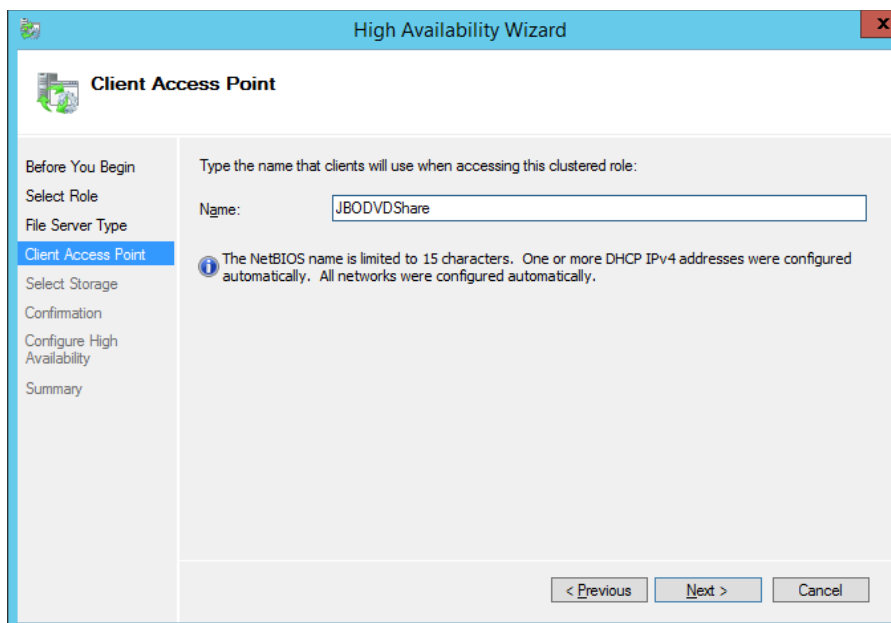


Figure 3-17 Naming the Role for Clients

Select the virtual disk created earlier; also note that the selection has been expanded to show the volumes that “belong” to this virtual disk.

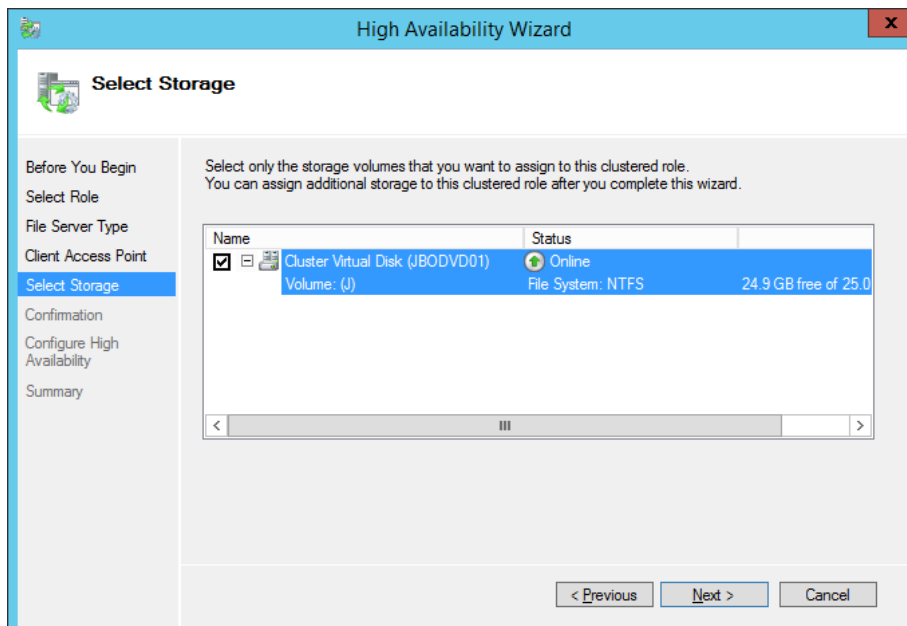


Figure 3-18 Selecting Storage for the Share

Finally, confirm to accept the selection.

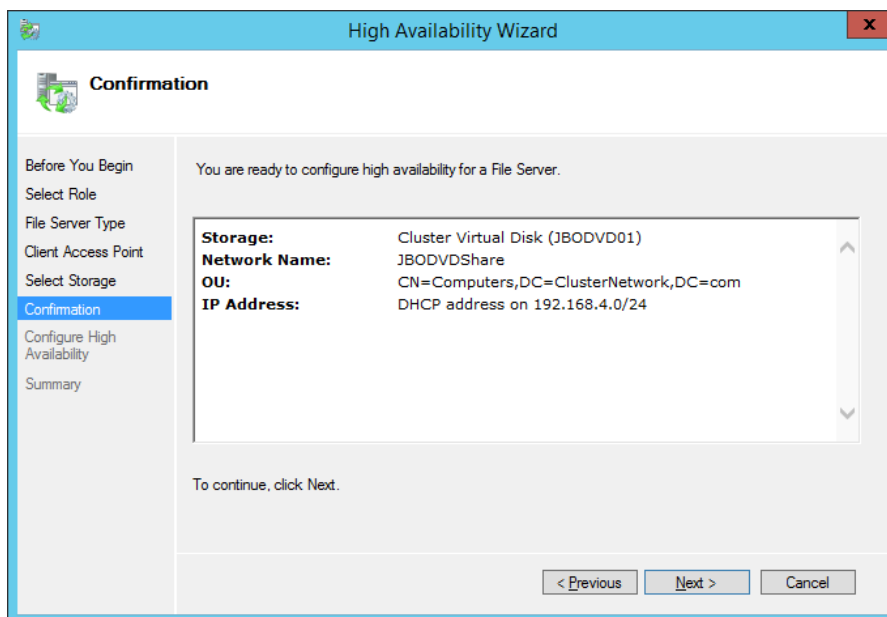


Figure 3-19 Confirming the Clustered Role Selection

The summary screen is shown in Figure 3-20 below.

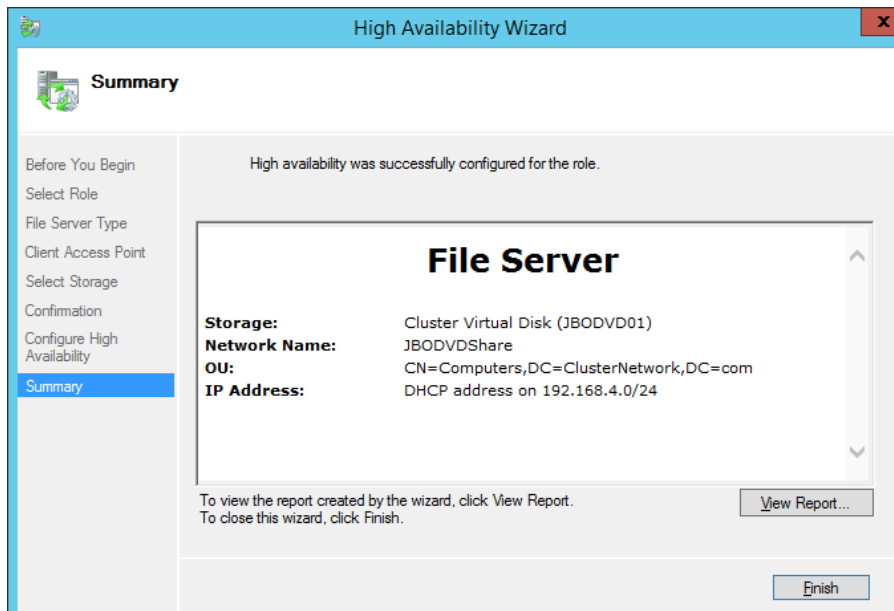


Figure 3-20 File Server Summary Screen

Returning to the main Failover Cluster Manager screen, the new role shows the following information: it is owned by node cluster-N1, the status is running and an IP address of 192.168.4.177 has been allocated.

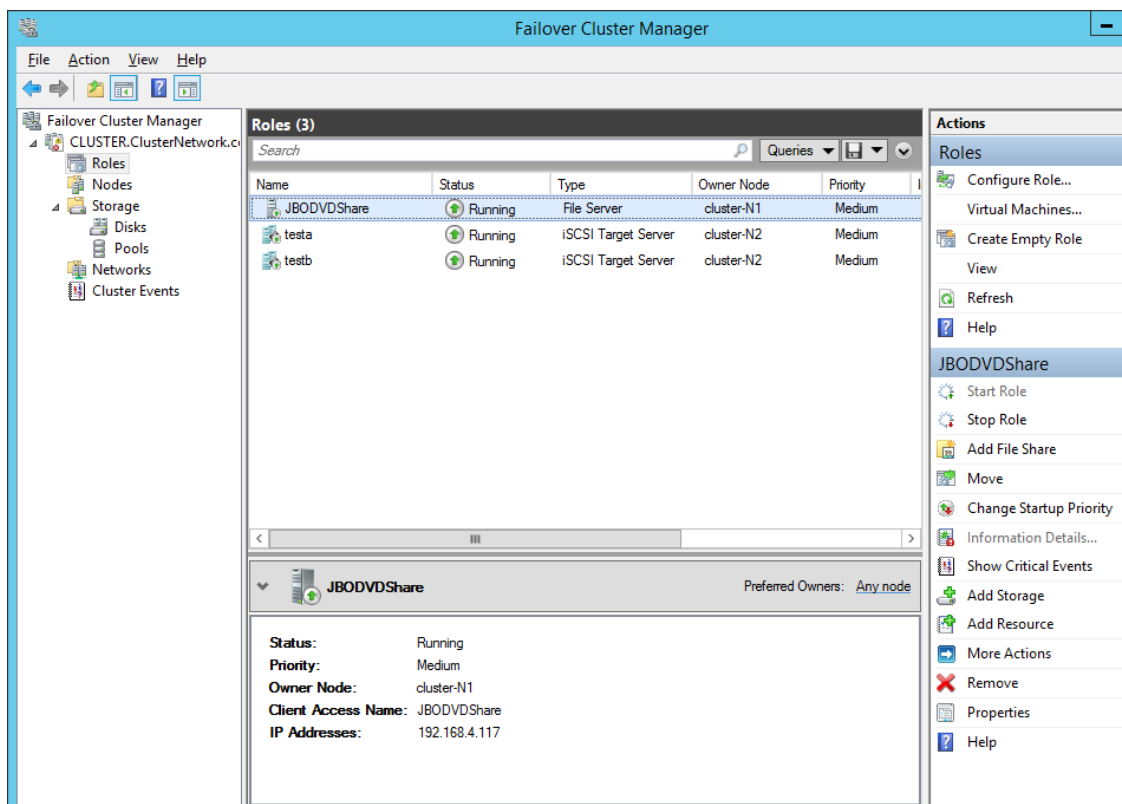
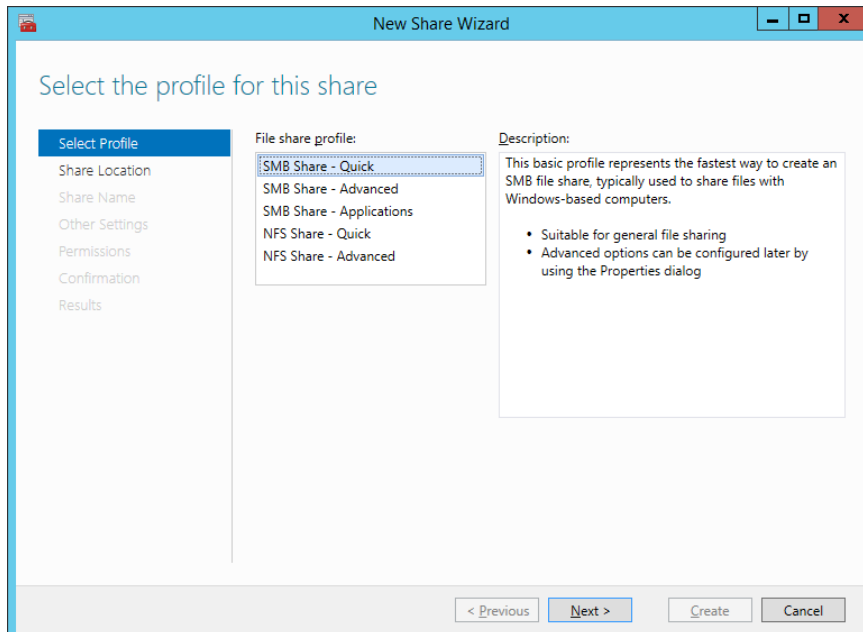


Figure 3-21 Showing the Newly Added File Server Role

Now that the role has been added, the next step is to create a file share for client access. From the right hand side of the screen select <Add File Share>.



Both NFS and SMB file are supported. Users can select the <Advanced> options for greater degrees of granularity or simply select the *Quick* option.

The next screen requests the share location.

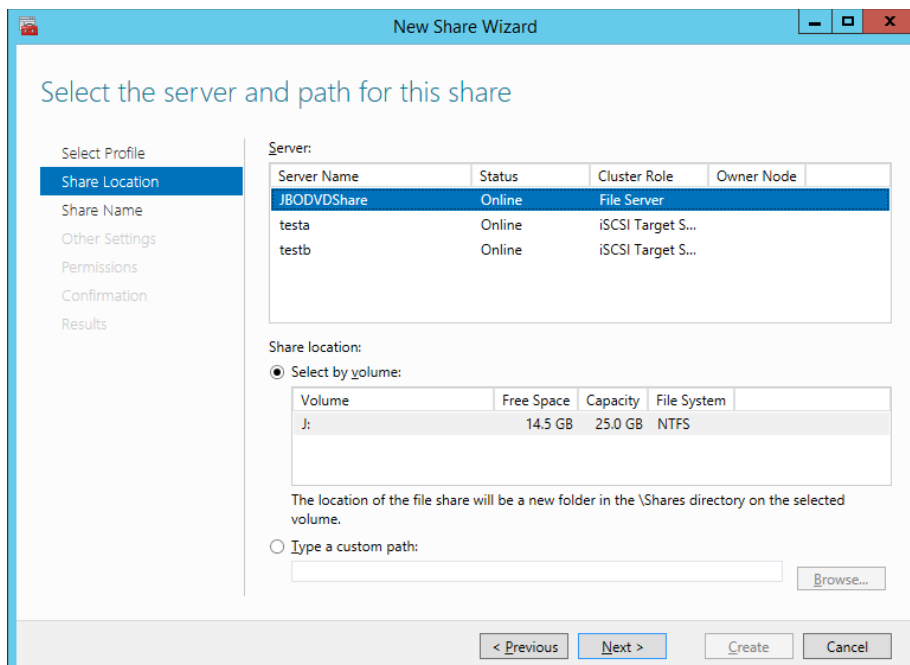


Figure 3-22 Selecting the File Share Location

Select the appropriate settings for the share and then select <Next>. This is where access control can be implemented.

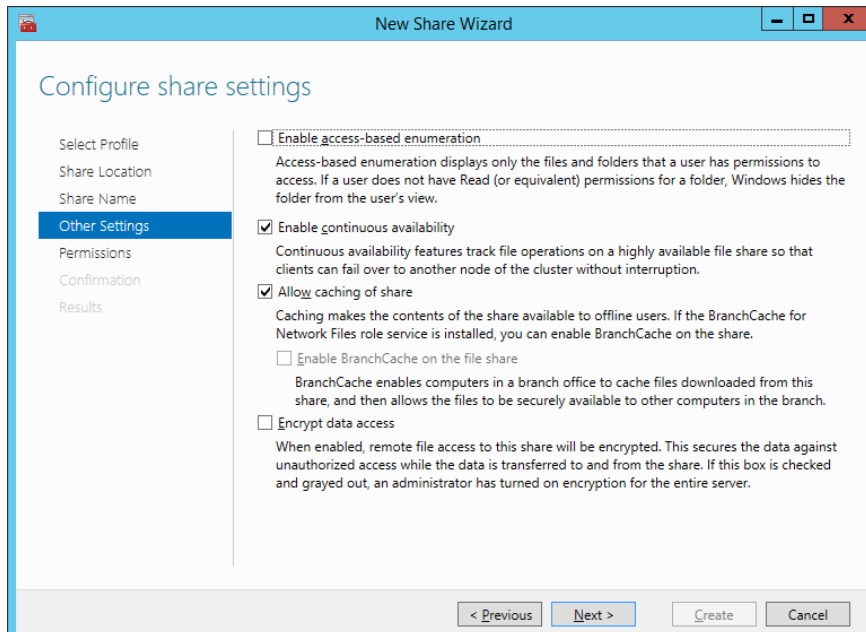


Figure 3-23 Selecting the Share Setting

Finally, confirm the action.

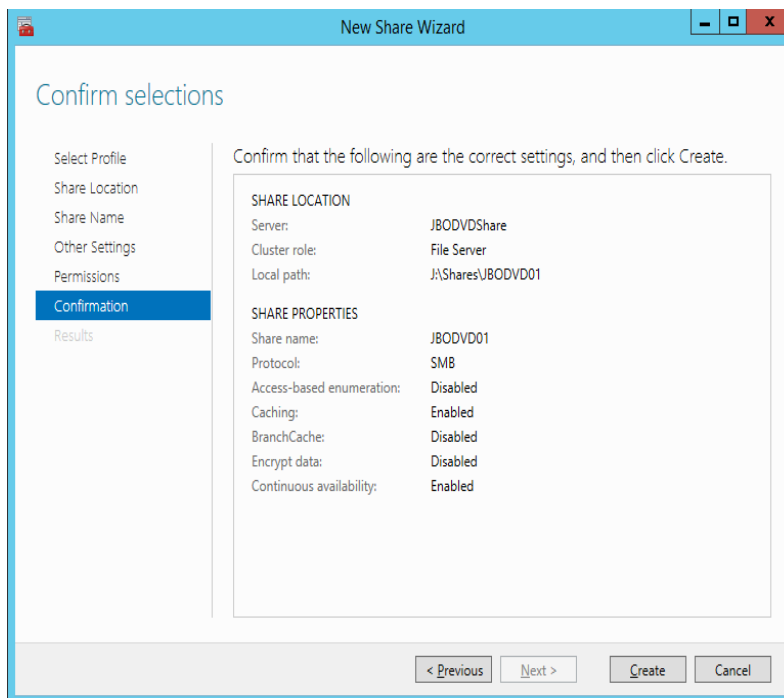


Figure 3-24 Confirming the SMB Share Creation

Accessing the share

Invoke the run command <Windows key + r> and enter the IP address (as shown at the bottom of Figure 3-21) of the share into the dialog box.

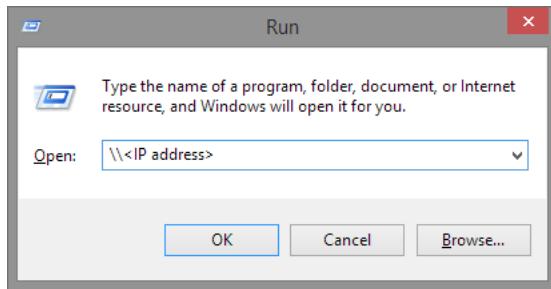


Figure 3-25 Entering the File Share IP Address

The share should now appear as shown below.

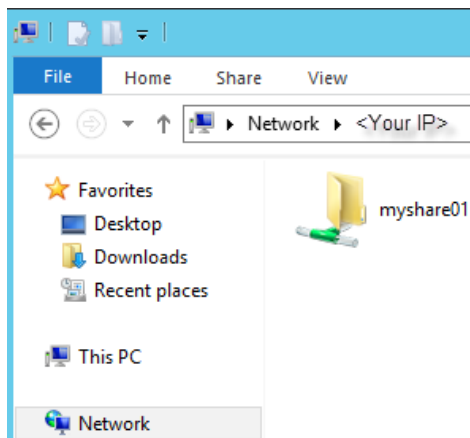


Figure 3-26 Viewing the Newly Created Share

Example 5 – Creating an iSCSI Target Role

From the Server Manager main screen, select <Tools> - <Failover Cluster Manager>.

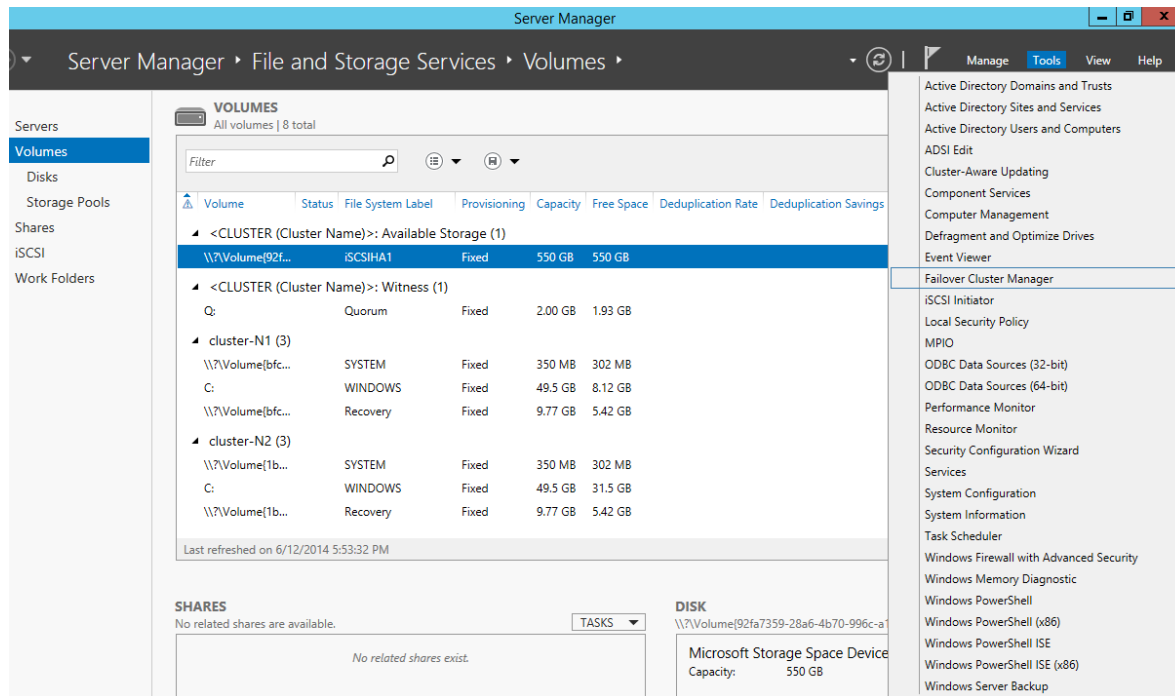


Figure 3-27 Bringing up the Failover Cluster Manager

Select <Roles>

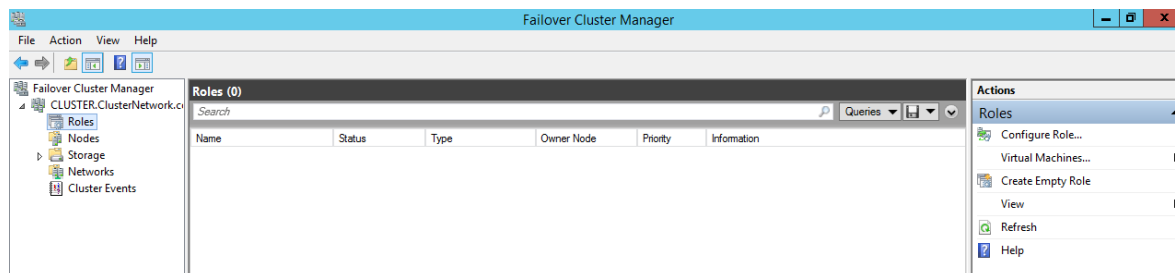


Figure 3-28 Selecting a High Availability Role

From the drop down choices select <iSCSI Target Server> and then <Next>.

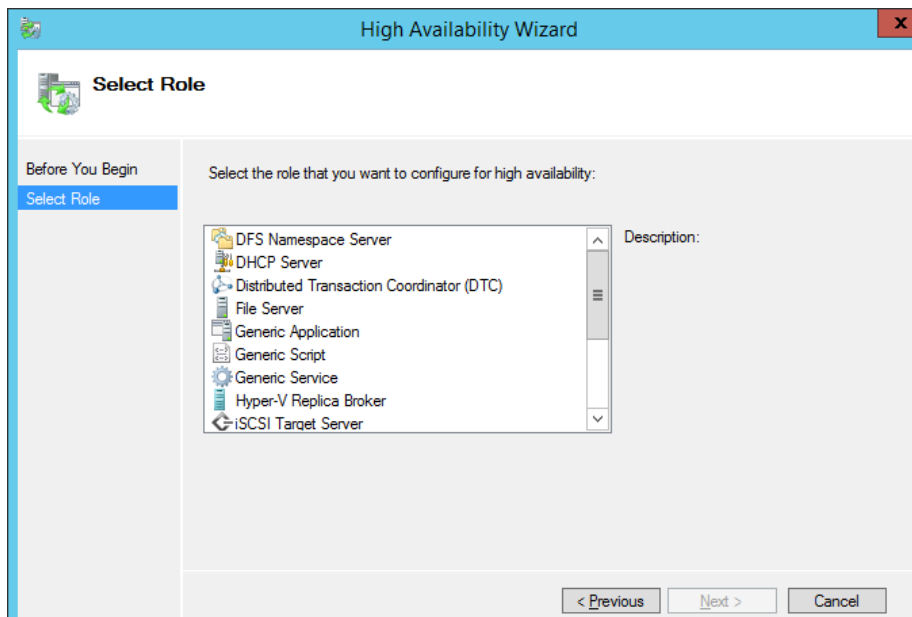


Figure 3-29 Selecting a Highly Available iSCSI Target Server Role

Name the role.

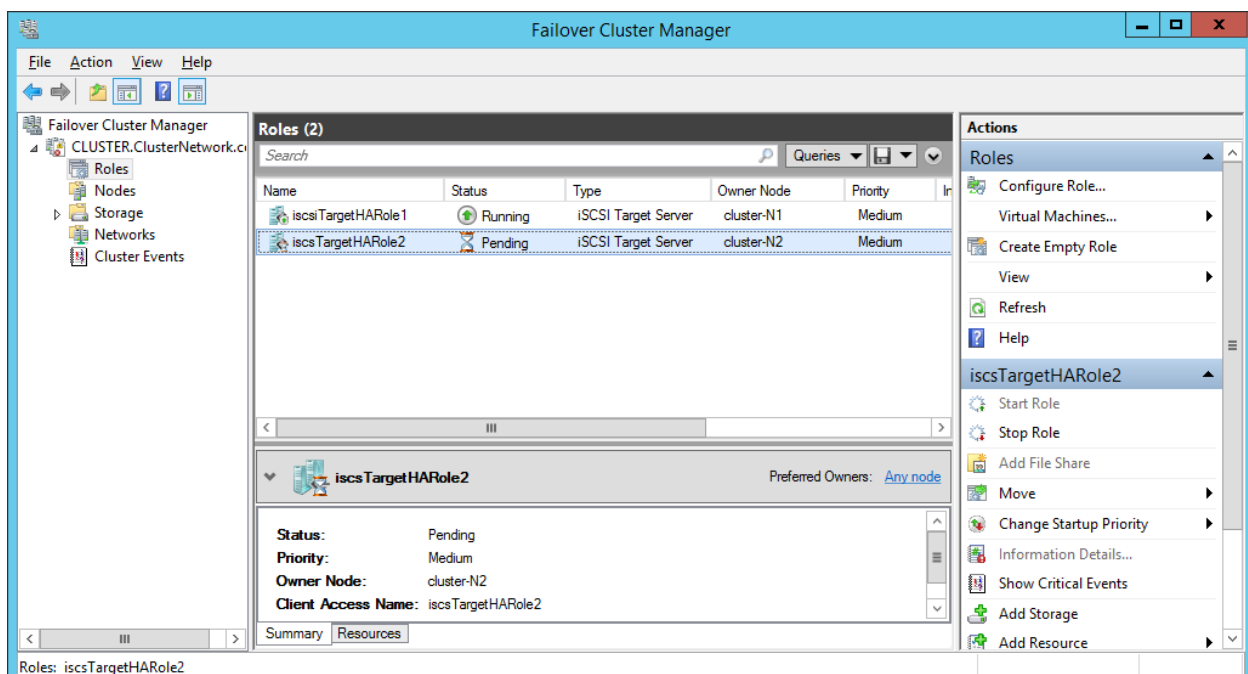


Figure 3-30 Naming the iSCSI Target Server Role

Select the virtual disk to host the iSCSI server.

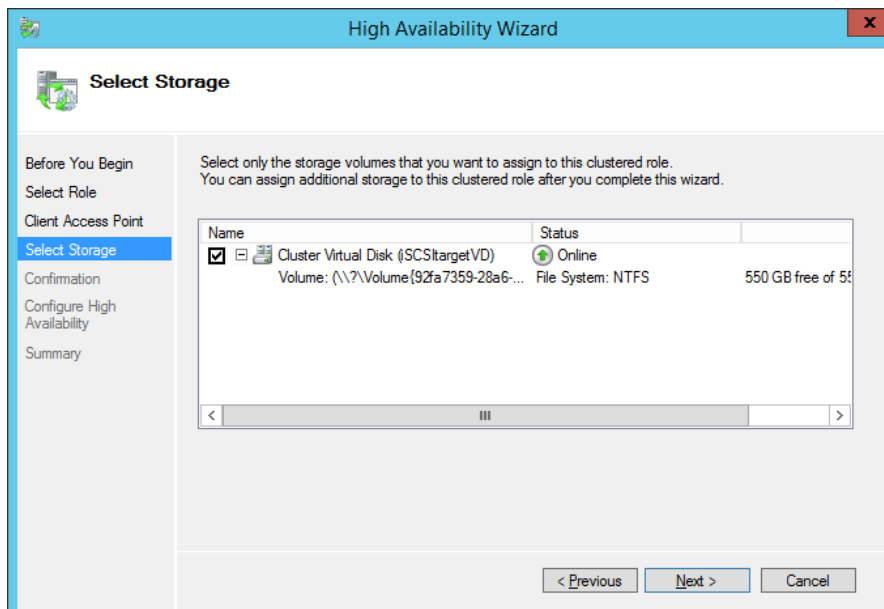


Figure 3-31 Selecting the Virtual Disk for the iSCSI Role

Confirm the selection.

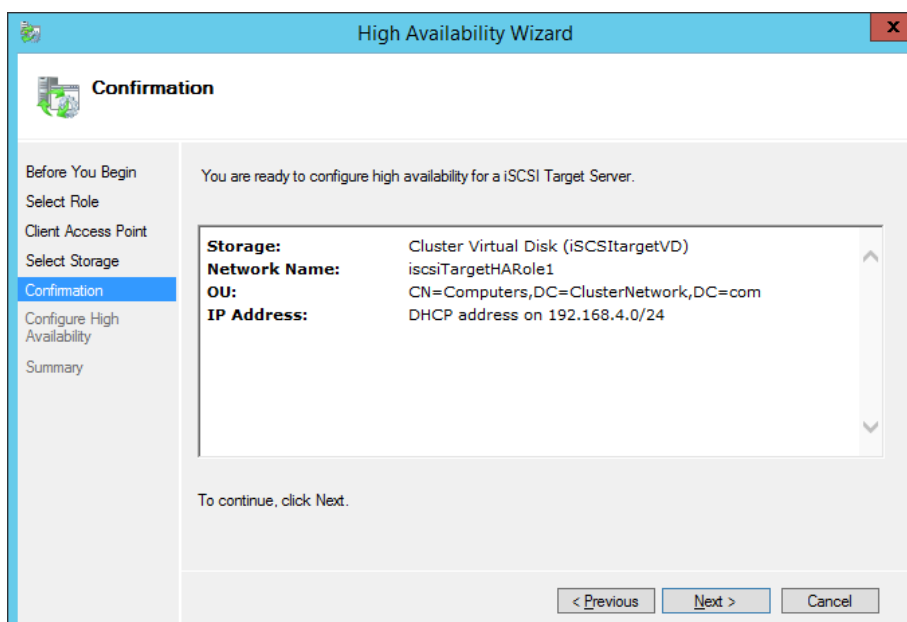


Figure 3-32 Confirming the iSCSI Target Server Selection

After the server has been created a report of all the steps can be shown by selecting the <View Report> button if desired.

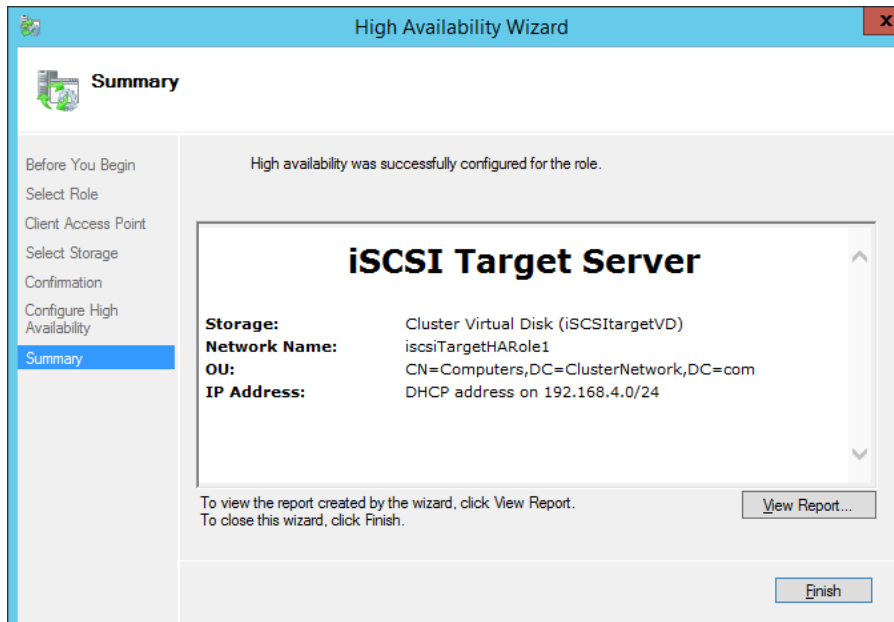


Figure 3-33 Summary Screen of the iSCSI Server Role Creation

The role shows that it has been allocated an IP address of 192.168.4.115. Clients using their local iSCSI initiators will use this address in their discovery portal of the initiator. Since it is a high availability role nodes can fail over seamlessly as either node can respond to this IP.

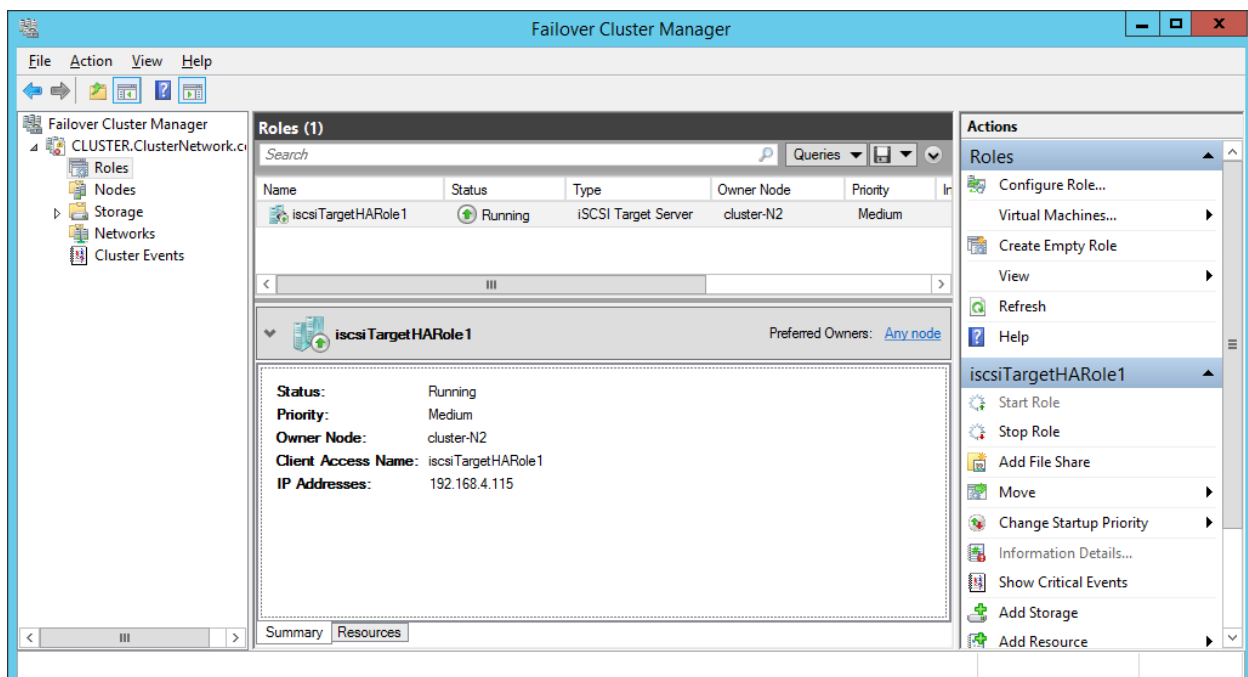


Figure 3-34 Showing the iSCSI Target Role

Storage can be added to this role and now shared out to clients.

Example 6 – Creating a Storage Tier

This example shows the creation of an iSCSI based storage tier. In Figure 3-35 below, the option to create a storage tier is checked.

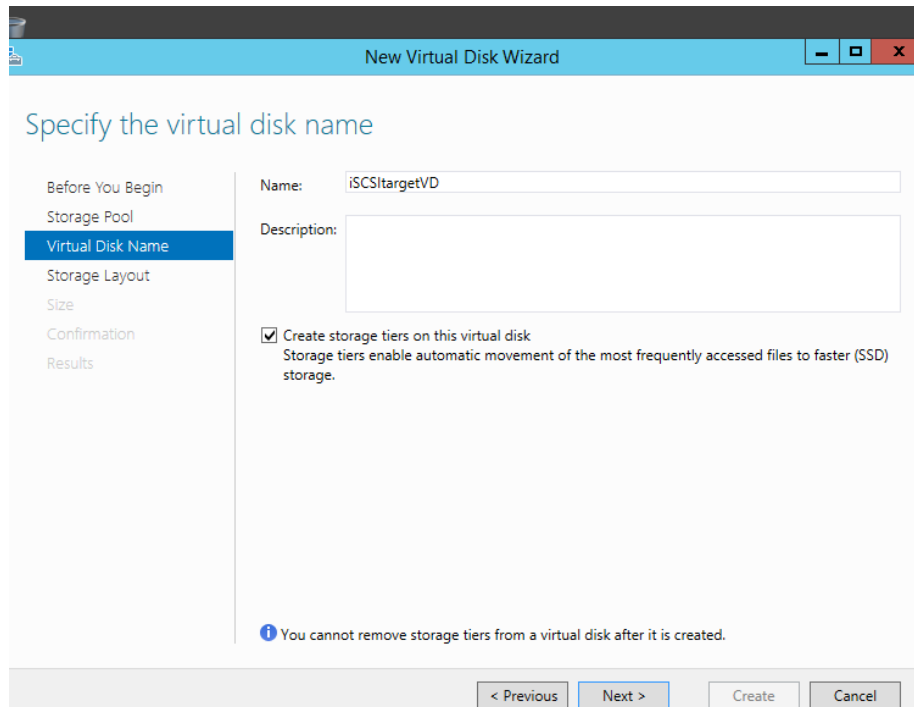


Figure 3-35 Creating a Tiered Virtual Disk

Select <Next> to configure the capacity. Since the storage tiering option was selected, the ratio of SSD space to HDD space can be selected on a later screen. Again, this is highly dependent on the nature of the application.



Backup or large streaming applications where the data is not regularly revisited are in general less attractive candidates for tiering. A backup application may write the data once and then perform a verify pass and afterwards this data might never be accessed again. A transaction oriented application can in many cases perform well if the data is such that it is shared among many users and exhibits locality of reference as briefly described on page 2-6.

The next stage is to configure the storage layout. In this example a mirrored layout will be selected to provide a degree of data resiliency.

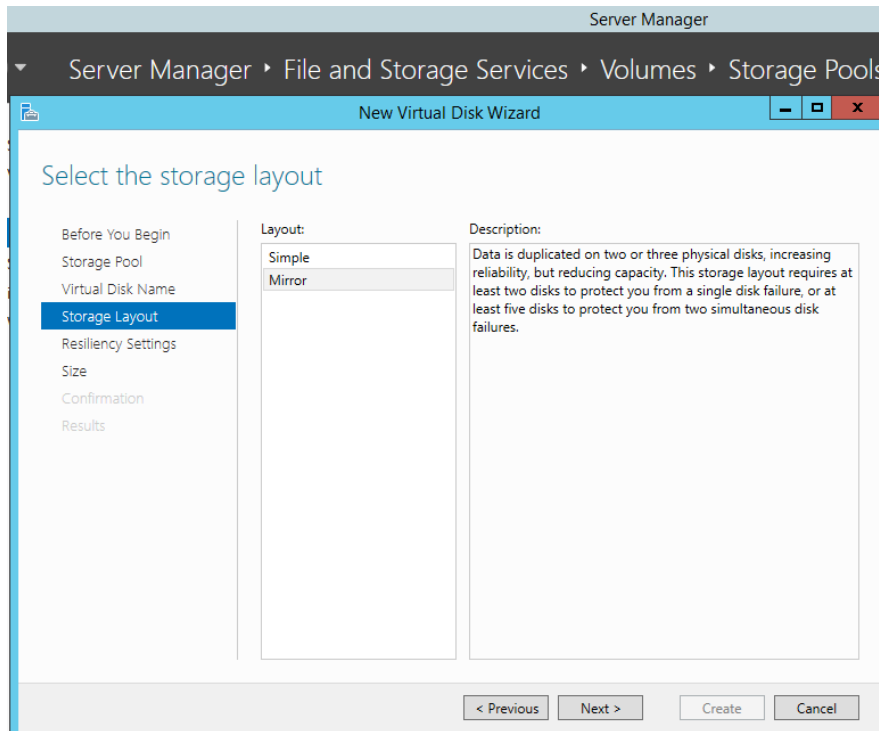


Figure 3-36 Selecting the Storage Layout

Next, configure the resiliency settings. Refer to page 2-5 for a description of resiliency options and requirements.



A two way mirror will be used here, in that it represents a good tradeoff between performance, capacity and cost in a file sharing application. Essentially 50% of the capacity is used for resiliency. Three way mirroring can be used for increased data availability, and parity based spaces can be deployed for better capacity usage.

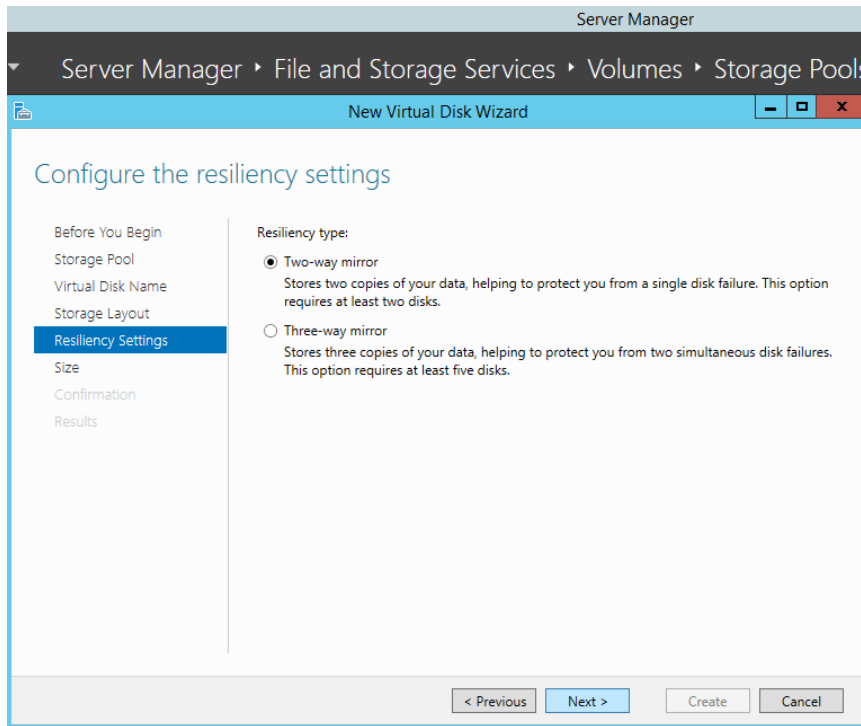


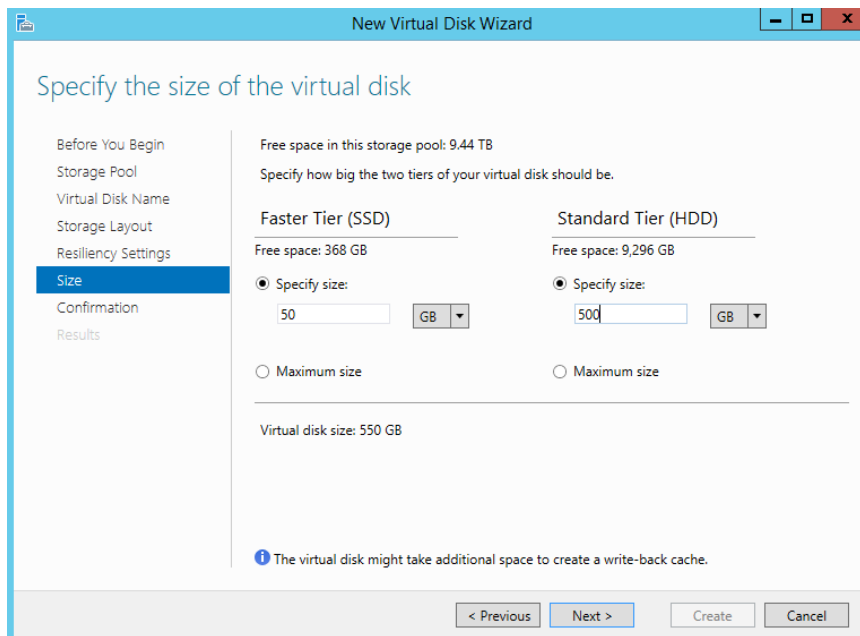
Figure 3-37 Selecting the Resiliency Type

The next screen is used to select the tiering ratio.

A reasonable rule of thumb is to allocate 10% of capacity to SSD. However it is also possible to *pin* files to an SSD using powershell commands. Pinning has the effect of moving a file from an HDD to an SSD immediately. These types of files then will always be accessed from the fast media.



It is recommended to let the system handle tiering automatically, however *power users* may wish to investigate the pinning function. One of the pitfalls with pinning is that a file that has manually been pinned in the past is that it may no longer require frequent access. This could limit the available SSD space for automatic tiering and caching.



Specify the size of the virtual disk

Before You Begin
Storage Pool
Virtual Disk Name
Storage Layout
Resiliency Settings
Size
Confirmation
Results

Free space in this storage pool: 9.44 TB
Specify how big the two tiers of your virtual disk should be.

Faster Tier (SSD)	Standard Tier (HDD)
Free space: 368 GB	Free space: 9,296 GB
<input checked="" type="radio"/> Specify size: <input type="text" value="50"/> GB	<input checked="" type="radio"/> Specify size: <input type="text" value="500"/> GB
<input type="radio"/> Maximum size	<input type="radio"/> Maximum size

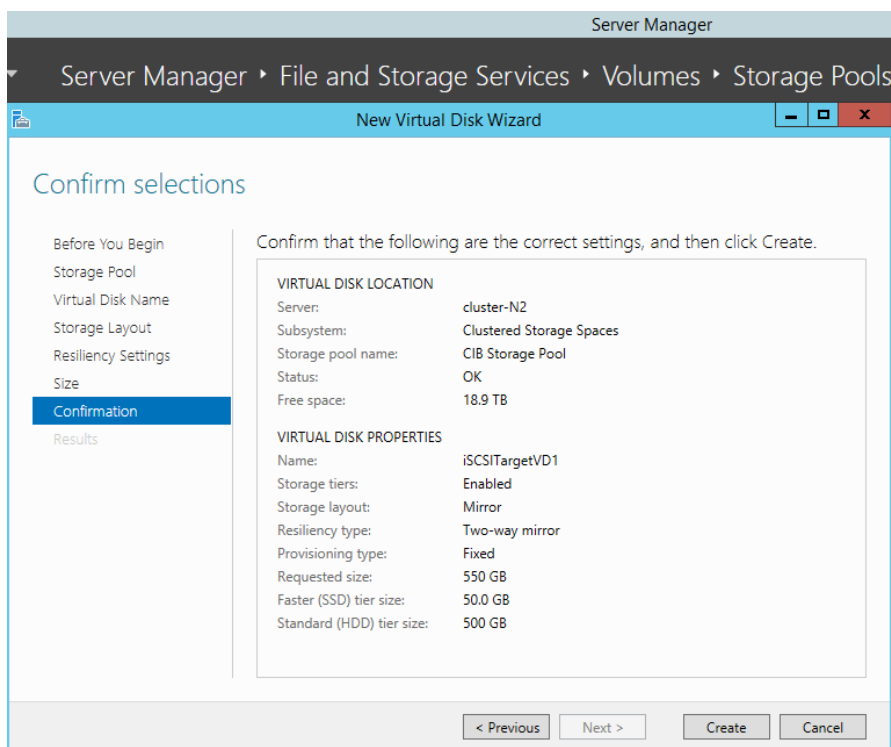
Virtual disk size: 550 GB

The virtual disk might take additional space to create a write-back cache.

< Previous Next > Create Cancel

Figure 3-38 Selecting the Capacity and SSD to HDD Ratio for the VD

Finally, create the virtual disk.



Confirm selections

Before You Begin
Storage Pool
Virtual Disk Name
Storage Layout
Resiliency Settings
Size
Confirmation
Results

Confirm that the following are the correct settings, and then click Create.

VIRTUAL DISK LOCATION	
Server:	cluster-N2
Subsystem:	Clustered Storage Spaces
Storage pool name:	CIB Storage Pool
Status:	OK
Free space:	18.9 TB

VIRTUAL DISK PROPERTIES	
Name:	iSCSITargetVD1
Storage tiers:	Enabled
Storage layout:	Mirror
Resiliency type:	Two-way mirror
Provisioning type:	Fixed
Requested size:	550 GB
Faster (SSD) tier size:	50.0 GB
Standard (HDD) tier size:	500 GB

< Previous Next > Create Cancel

Figure 3-39 Virtual Disk Creation Confirmation

Example 7 – Moving Ownership

Windows 2012 R2 allows Clustered Shared Volumes (CSVs) to have simultaneous read/write access from multiple nodes. A major benefit is that a failover can occur efficiently without the volume being dismounted and remounted. A CSV is *owned* by a particular node at any one time, which coordinates access. This ownership is balanced across the nodes automatically to ensure optimum performance. There are times however when the administrator may want to manually change ownership. This could be to prepare a node for maintenance, conduct tests or to do some fine tuning with regards to throughput.

The screenshot below shows that both roles are owned by cluster-N1.

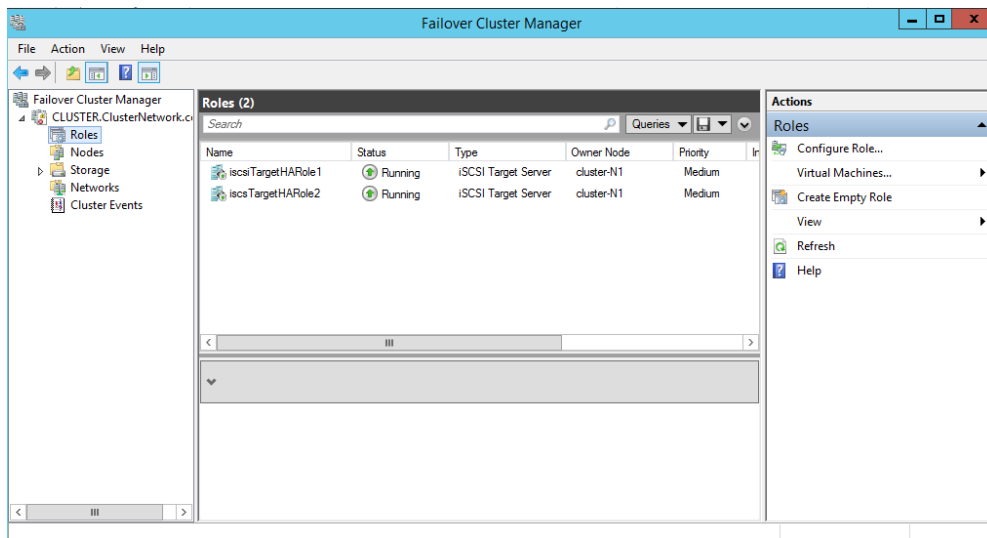


Figure 3-40 Changing Node Ownership - Screen 1

The ownership can be changed by selecting <Move> from the right hand pane and then choosing either <Best Possible Node> or <Select Node>.

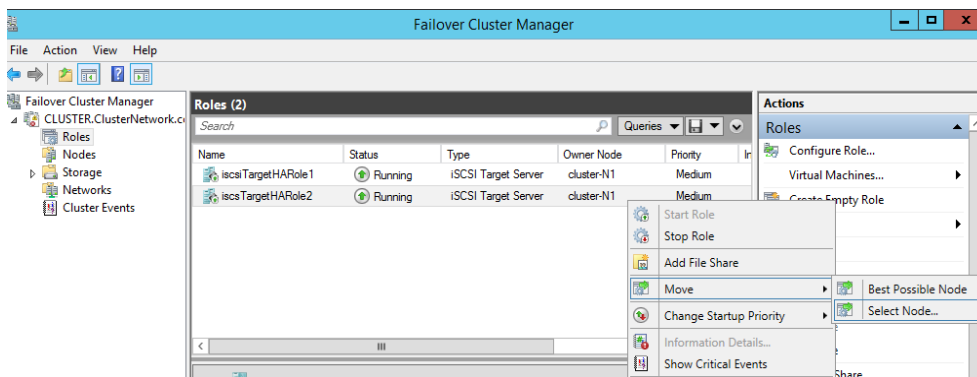


Figure 3-41 Changing Node Ownership - Screen 2

There is a choice to select <Best Possible Node> or to manually select a node. In this example the node will be selected, so select <Move> - <Select Node>. This will bring up the screen shown in Figure 3-42.

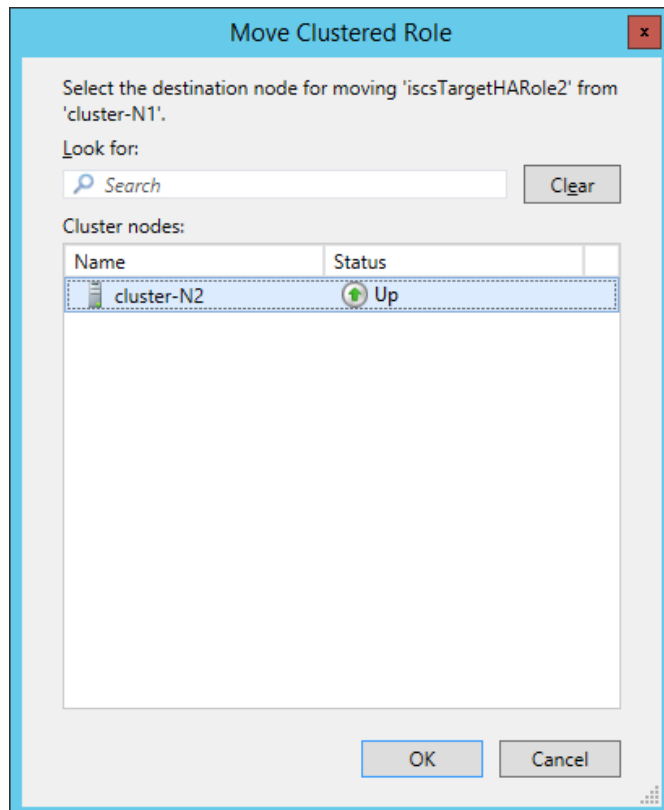


Figure 3-42 Changing Node Ownership - Screen 3

Select <cluster-N2> - <OK>.

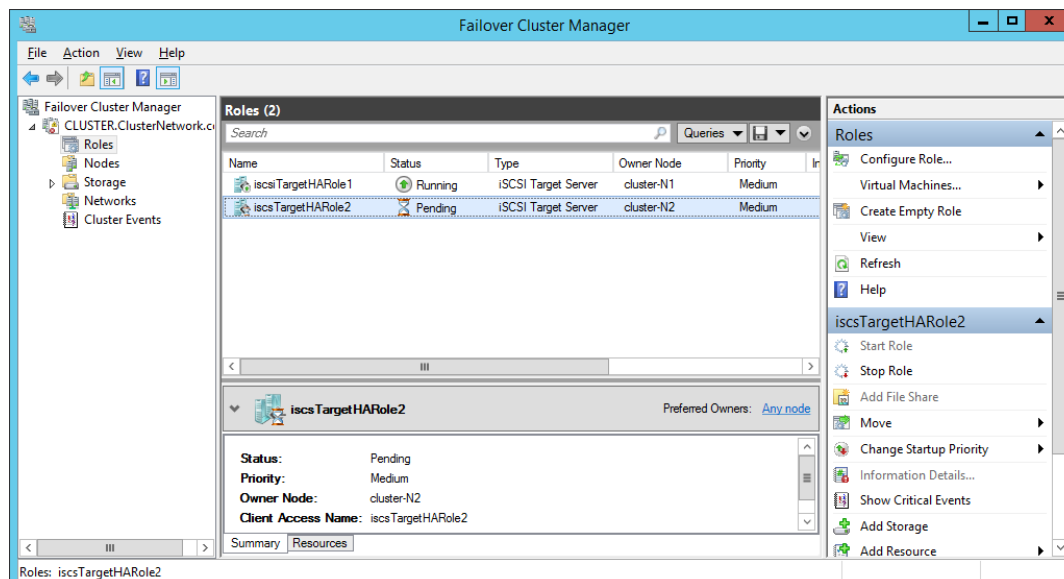


Figure 3-43 Changing Node Ownership - Screen 4

Figure 3-43 shows the second iSCSI role in a *pending* state. The change of ownership role should only take a few seconds. Finally, Figure 3-44 shows each role being owned by a different node.

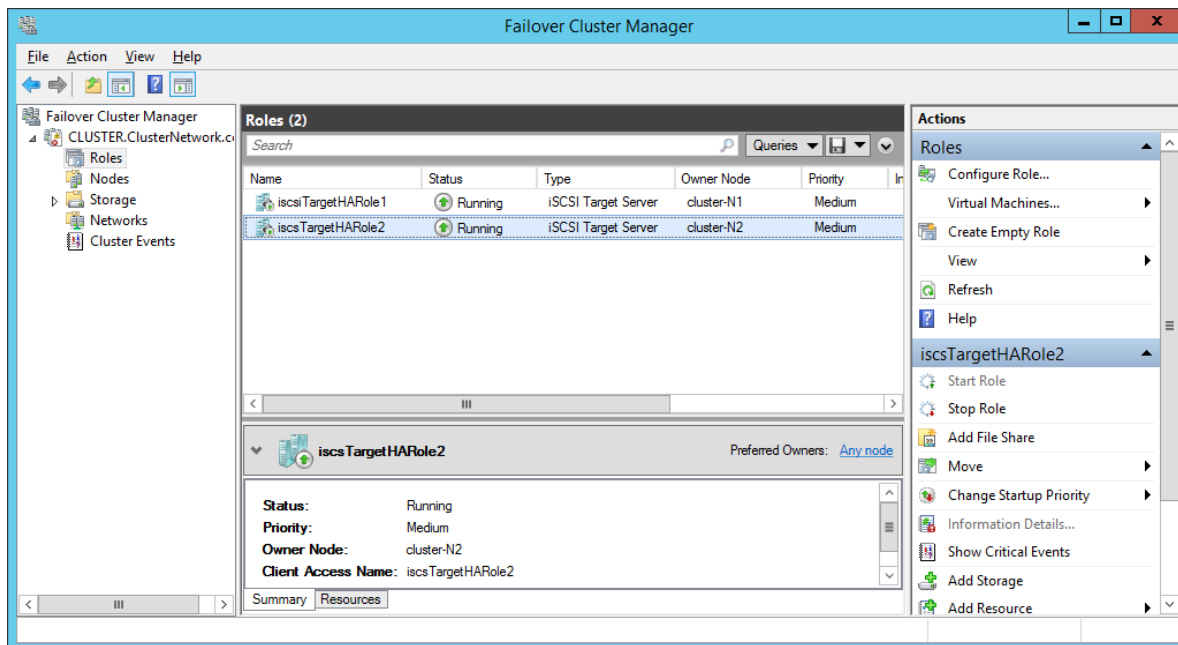


Figure 3-44 Changing Node Ownership - Screen 5

To designate a particular role with a preferred node, select the role and then from the right hand screen select <Properties> and check the preferred node.

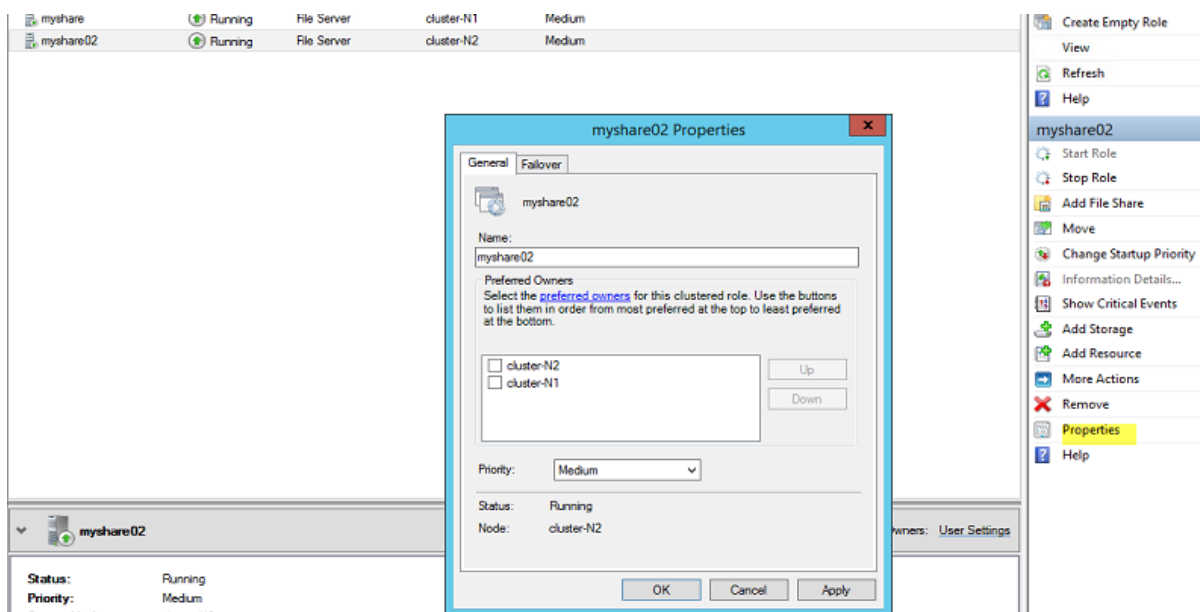


Figure 3-45 Selecting a Role's Preferred Owner



Prior to deployment in a production role, it is recommended that freshly created resources be failed over to each node in turn and back again to verify that both nodes can service clients in the event of a failed node situation.

Quorum and Ownership

Ownership plays a key role in the *quorum* function. The idea behind quorum is to avoid uncoordinated access to resources. In this situation each node is unaware of the other and data corruption can occur. This is commonly known as *split brain syndrome*. To avoid this, the concept of quorum is introduced. In a two node cluster such as Supermicro's CiB product, each node is allotted a single vote and a third resource – the quorum disk is also given a vote. For the cluster to function normally at least of two votes must be met. If there is uncoordinated access one node will own the quorum resource and therefore hold two votes. The other node will have no access to the quorum disk and will only hold one vote. Since one vote is not enough to maintain a cluster, cluster services will be stopped and the node will not be able to access the cluster resources. When the source of the issue is found the node without the necessary number of votes will be allowed to join the cluster in a controlled, coordinated fashion.



The quorum disk must be a shared volume so that it can be accessed by either node. The CiB comes with a pre-configured quorum disk within a pool. Refer to Figure 2-6 to show the disk configuration as shipped with the CiB. (Microsoft, 2013).

Further Resources

Please refer to the references for further information relating to the CiB and Windows Server 2012 R2.

4. References and Glossary

Glossary of terms

Term	Description
CSV	A Clustered Shared Volume is available to <i>all</i> nodes in a Windows Failover Cluster for read/write access.
Volume	An addressable storage entity, which can be physical or virtual, normally takes a drive letter in a Windows environment.
SMB	This is a file protocol (Server Message Block) that provides file access to clients over a network.
Quorum Disk	A shared disk resource that can be used to prevent partitioned (split-brain) clusters.
Cluster	A collection of computers that are interconnected (typically at high speeds) for the purpose of improving reliability, availability, serviceability, load balancing and/or performance. (Storage Networking Industry Association, 2013)
JBOD	A disk enclosure using the acronym J ust a B unch O f D isks.
RAS	Reliability, Availability and Serviceability.
Storage Pool	A collection of physical disks that enables you to aggregate disks, expand capacity in a flexible manner and delegate administration (Microsoft, 2014).
Storage Space	Virtual disks created from a storage pool.
Tiering	Automatically placing “hot data” to an SSD and placing “cold data” back to an HDD.
Virtual disk	A disk aggregated from the capacity within the storage pool.
Write back cache (spaces)	Data is written to low latency SSDs first, and then migrated to a secondary volume.



References/Useful Links

Microsoft. (2013, October). *Deploy a Hyper-V Cluster*. Retrieved from <http://technet.microsoft.com/en-us/library/jj863389.aspx>

Microsoft. (2014). *Failover Cluster Step-by-Step Guide: Configuring the Quorum in a Failover Cluster*. Retrieved from [http://technet.microsoft.com/en-us/library/cc770620\(v=WS.10\).aspx](http://technet.microsoft.com/en-us/library/cc770620(v=WS.10).aspx)

Microsoft. (2014, April). *Windows Server*. Retrieved from Storage Spaces overview: <http://technet.microsoft.com/en-us/library/hh831739.aspx>

Storage Networking Industry Association,. (2013). SNIA Dictionary. In *SNIA Dictionary* (p. 40).

Supermicro. (2014). *CiB Solution Customer Walkthrough*. Supermicro.

Supermicro. (2014). *Windows Storage Server 2012 R2 on Supermicro High-Performance 2U Cluster-in-a-Box*. Retrieved from <http://www.supermicro.com/products/nfo/files/CiB/SSG-2027B-CIB020H.pdf>

Supermicro. (2014). *Windows Storage Server 2012 R2 on Supermicro High-Performance 3U Cluster-in-a-Box*. Retrieved from <http://www.supermicro.com/products/nfo/files/CiB/SSG-6037B-CIB032.pdf>